



FLOORPLANS

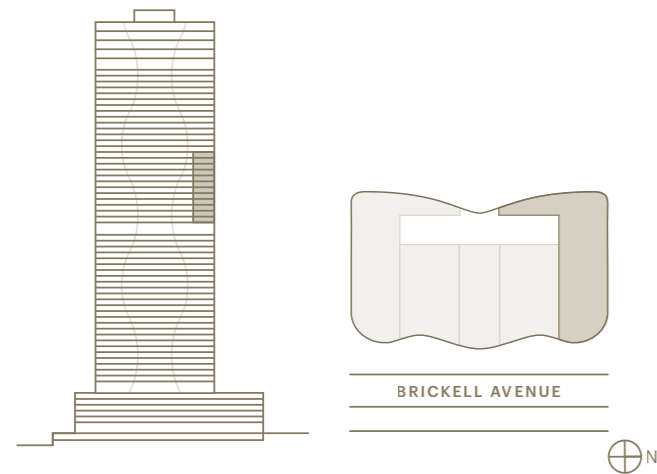
THE RESIDENCES AT
1428 BRICKELL

RESIDENCE D NORTH

4 BEDROOMS | 4 BATHROOMS
POWDER ROOM | DEN | SUNRISE TERRACE
SUMMER KITCHEN

INTERIOR AREA: 3,467 SF / 322 SM
EXTERIOR AREA: 356 SF / 33 SM
TOTAL AREA: 3,823 SF / 355 SM

- One-of-a-kind Antonio Citterio designed interiors
- Double-door entry from private foyer
- Private elevator foyer
- Each home faces east towards Biscayne Bay
- 11' ceiling heights
- Independent service entrance
- Expansive Great Room and bedrooms
- En-suite bathroom in all bedrooms
- Antonio Citterio-designed closets
- Dual private water closets with high efficiency smart toilets
- Glass-enclosed Arclinea kitchen with Gaggenau appliances
- Large east-facing terrace
- Summer kitchen
- Private package and dry-cleaning delivery compartment



See legal disclaimer on back page.



DO | DOUBLE OVEN
FR | FREEZER
P | PANTRY
REF | REFRIGERATOR
WC | WINE COOLER
WIC | WALK-IN CLOSET

BRICKELL AVENUE

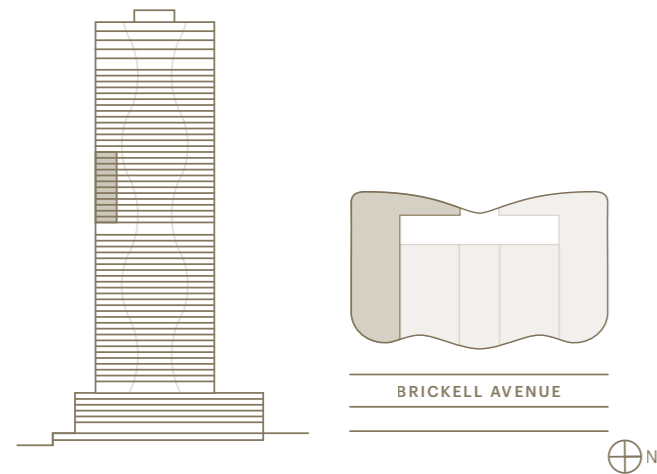
THE RESIDENCES AT
1428 BRICKELL

RESIDENCE D SOUTH

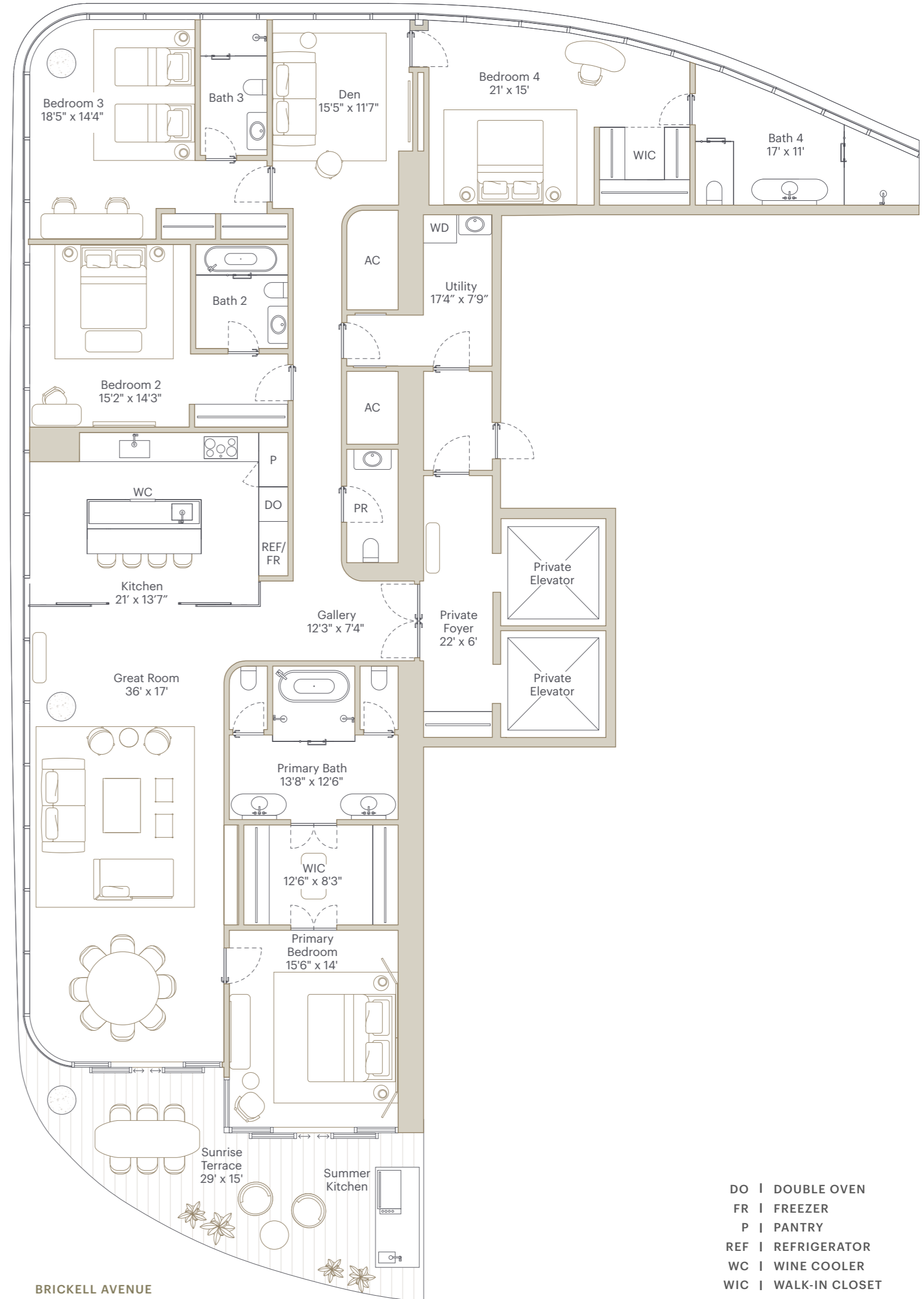
4 BEDROOMS | 4 BATHROOMS
POWDER ROOM | DEN | SUNRISE TERRACE
SUMMER KITCHEN

INTERIOR AREA: 3,436 SF / 319 SM
EXTERIOR AREA: 356 SF / 33 SM
TOTAL AREA: 3,792 SF / 352 SM

- One-of-a-kind Antonio Citterio designed interiors
- Double-door entry from private foyer
- Private elevator foyer
- Each home faces east towards Biscayne Bay
- 11' ceiling heights
- Independent service entrance
- Expansive Great Room and bedrooms
- En-suite bathroom in all bedrooms
- Antonio Citterio-designed closets
- Dual private water closets with high efficiency smart toilets
- Glass-enclosed Arclinea kitchen with Gaggenau appliances
- Large east-facing terrace
- Summer kitchen
- Private package and dry-cleaning delivery compartment



See legal disclaimer on back page.



BRICKELL AVENUE

