



FLOORPLANS

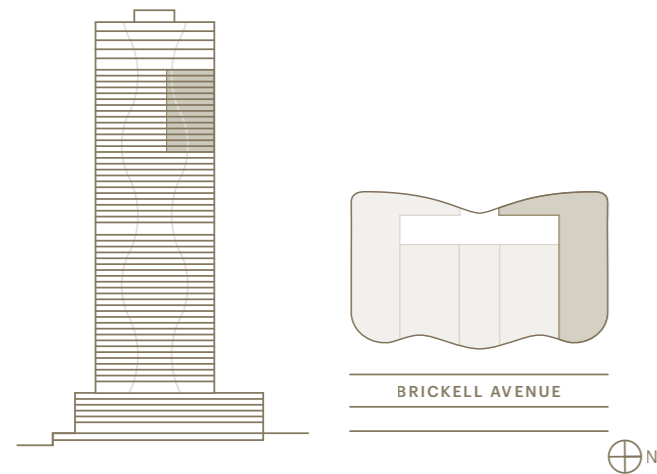
THE RESIDENCES AT
1428 BRICKELL

RESIDENCE F NORTH

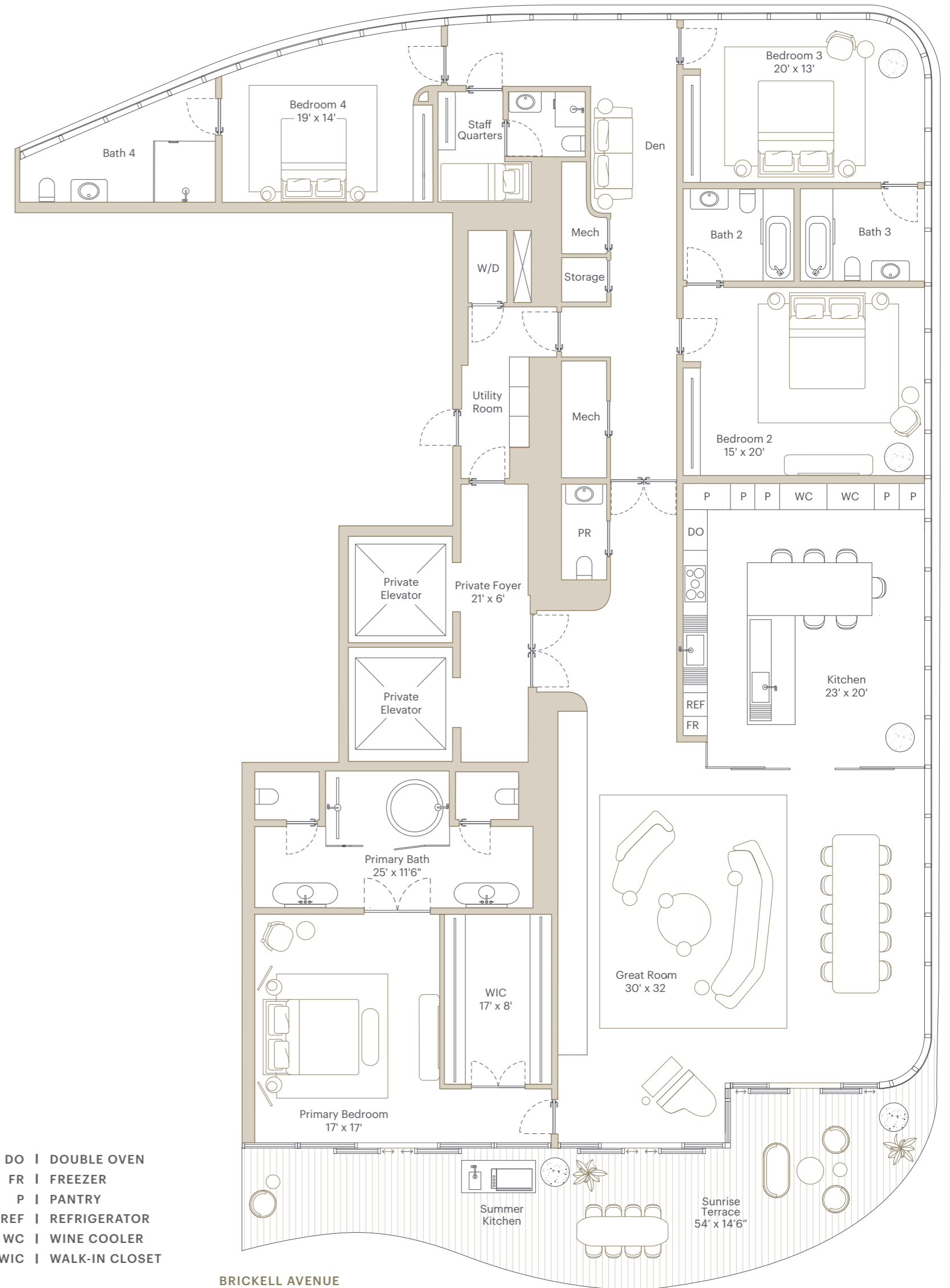
4 BEDROOMS | 4 BATHROOMS
POWDER ROOM | DEN | SUNRISE TERRACE
SUMMER KITCHEN

INTERIOR AREA: 4,171 SF / 387 SM
EXTERIOR AREA: 683 SF / 63 SM
TOTAL AREA: 4,854 SF / 450 SM

- One-of-a-kind Antonio Citterio designed interiors
- Double-door entry from private foyer
- Private elevator foyer
- Each home faces east towards Biscayne Bay
- 12' ceiling heights
- Independent service entrance
- Expansive Great Room and bedrooms
- En-suite bathroom in all bedrooms
- Antonio Citterio-designed closets
- Dual private water closets with high efficiency smart toilets
- Glass-enclosed Arclinea kitchen with Gaggenau appliances
- Large northeast-facing terrace
- Summer kitchen
- Private package and dry-cleaning delivery compartment



See legal disclaimer on back page.



- DO | DOUBLE OVEN
- FR | FREEZER
- P | PANTRY
- REF | REFRIGERATOR
- WC | WINE COOLER
- WIC | WALK-IN CLOSET

BRICKELL AVENUE

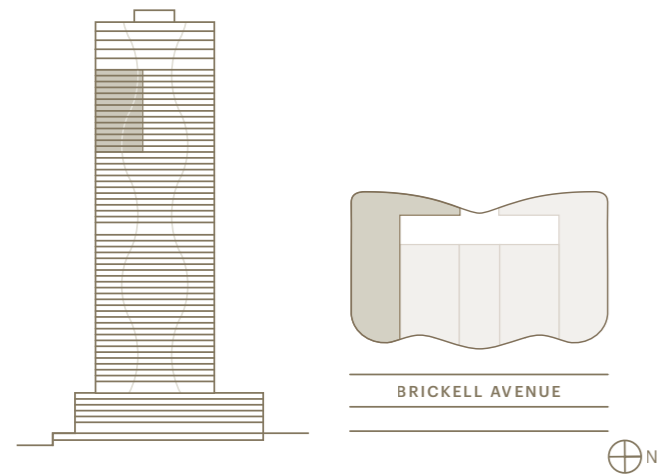
THE RESIDENCES AT
1428 BRICKELL

RESIDENCE F SOUTH

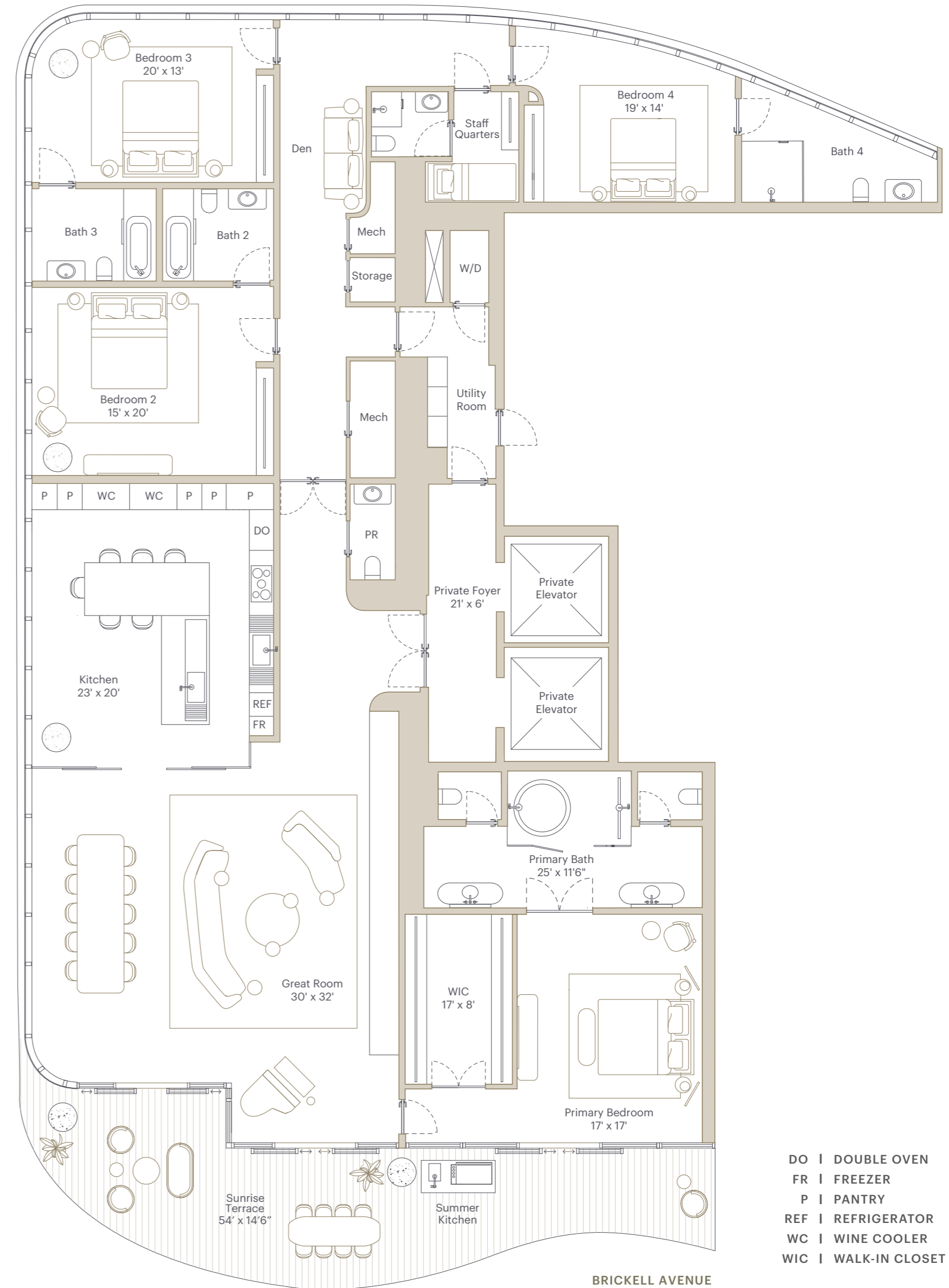
4 BEDROOMS | 4 BATHROOMS
POWDER ROOM | DEN | SUNRISE TERRACE
SUMMER KITCHEN

INTERIOR AREA: 4,134 SF / 384 SM
EXTERIOR AREA: 683 SF / 63 SM
TOTAL AREA: 4,817 SF / 447 SM

- One-of-a-kind Antonio Citterio designed interiors
- Double-door entry from private foyer
- Private elevator foyer
- Each home faces east towards Biscayne Bay
- 12' ceiling heights
- Independent service entrance
- Expansive Great Room and bedrooms
- En-suite bathroom in all bedrooms
- Antonio Citterio-designed closets
- Dual private water closets with high efficiency smart toilets
- Glass-enclosed Arclinea kitchen with Gaggenau appliances
- Large southeast-facing terrace
- Summer kitchen
- Private package and dry-cleaning delivery compartment



See legal disclaimer on back page.



- DO | DOUBLE OVEN
- FR | FREEZER
- P | PANTRY
- REF | REFRIGERATOR
- WC | WINE COOLER
- WIC | WALK-IN CLOSET

