

THE RESIDENCES AT
1428 BRICKELL

THE RESIDENCES AT

1428 BRICKELL

RESIDENCE A SOUTH

2 BEDROOMS | 3 BATHROOMS

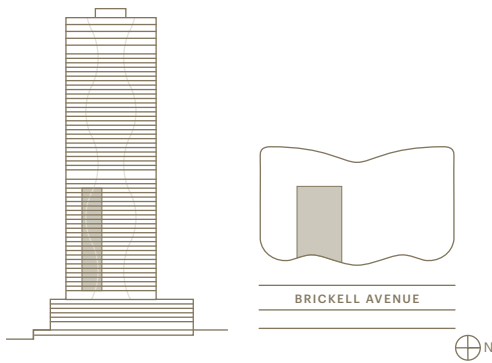
DEN | SUNRISE TERRACE | SUMMER KITCHEN

INTERIOR AREA: 1,809 SF / 168 SM

EXTERIOR AREA: 424 SF / 39 SM

TOTAL AREA: 2,233 SF / 207 SM

- One-of-a-kind Antonio Citterio designed interiors
- Double-door entry from private foyer
- Private elevator foyer
- Each home faces east towards Biscayne Bay
- 11' ceiling heights
- Expansive great room and bedrooms
- En-suite bathroom in all bedrooms
- Antonio Citterio-designed closets
- Dual private water closets with high efficiency smart toilets
- Arclinea kitchen with Gaggenau appliances
- Large east-facing terrace
- Summer kitchen



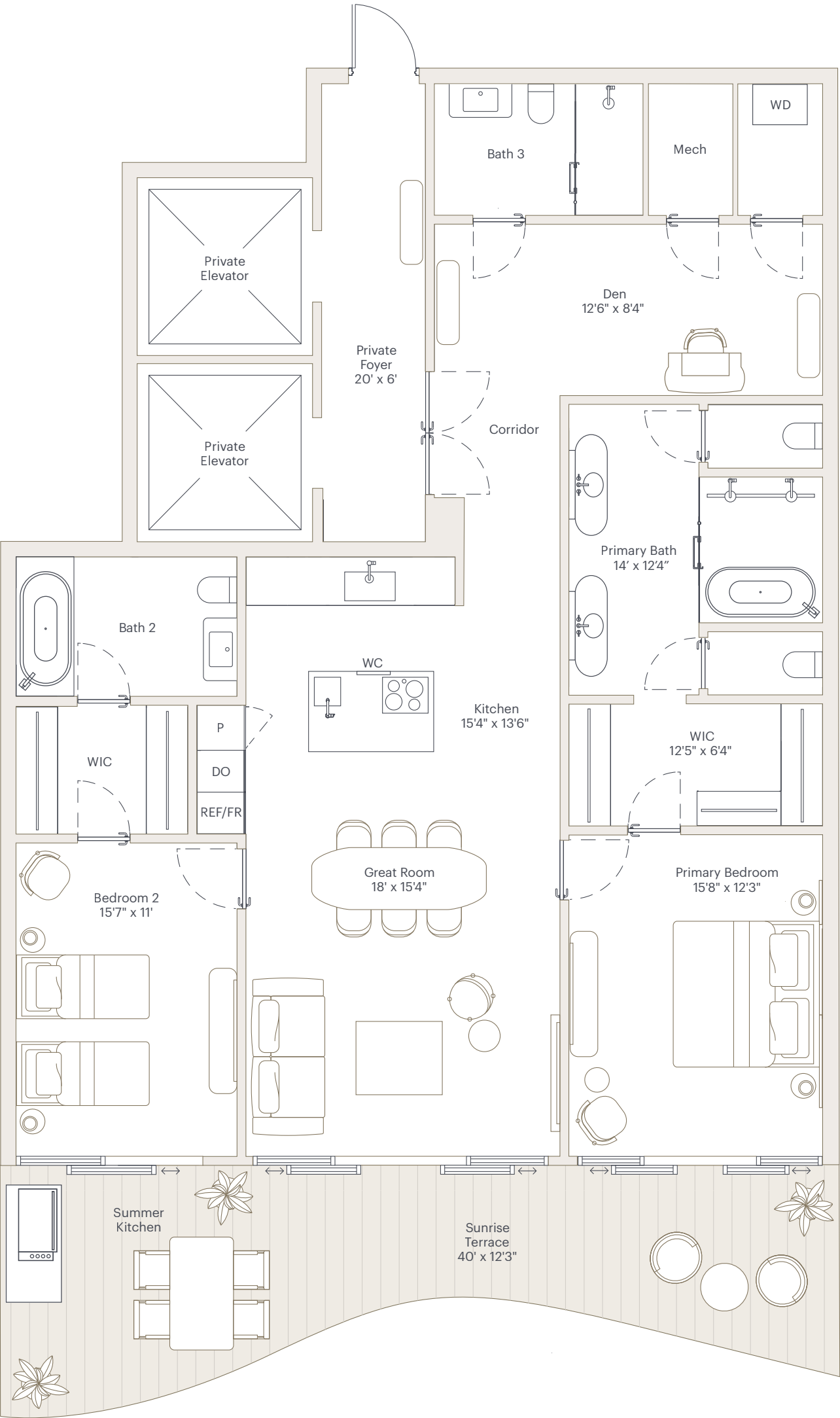
+ 1 305 706 1428 | INFO@1428BRICKELL.COM | 1428BRICKELL.COM

ORAL REPRESENTATIONS CANNOT BE RELIED UPON AS CORRECTLY STATING THE REPRESENTATIONS OF THE DEVELOPER. FOR CORRECT REPRESENTATIONS, MAKE REFERENCE TO THIS BROCHURE AND TO THE DOCUMENTS REQUIRED BY SECTION 718.503, FLORIDA STATUTES, TO BE FURNISHED BY A DEVELOPER TO A BUYER OR LESSEE.

WE ARE PLEDGED TO THE LETTER AND SPIRIT OF THE U.S. POLICY FOR ACHIEVEMENT OF EQUAL HOUSING OPPORTUNITY THROUGHOUT THE NATION. WE ENCOURAGE AND SUPPORT AN AFFIRMATIVE ADVERTISING AND MARKETING PROGRAM IN WHICH THERE ARE NO BARRIERS TO OBTAINING HOUSING BECAUSE OF RACE, COLOR, RELIGION, SEX, HANDICAP, FAMILIAL STATUS OR NATIONAL ORIGIN.

Please note that the Developer is Ytech - 1428 Brickell, LLC.

This is not intended to be an offer to sell, or solicitation to buy, condominium units to residents of any jurisdiction where prohibited by law, and your eligibility for purchase will depend upon your state of residency. This offering is made only by the prospectus for the condominium and no statement should be relied upon if not made in the prospectus. The sketches, renderings, graphic materials, plans, specifications, terms, conditions and statements contained in this brochure are proposed only, and the Developer reserves the right to modify, revise or withdraw any or all of same in its sole discretion and without prior notice. All improvements, designs and construction are subject to first obtaining the appropriate federal, state and local permits and approvals for same. These drawings and depictions are conceptual only and are for the convenience of reference and including artists renderings. They should not be relied upon as representations, express or implied, of the final detail of the residences or the Condominium. The developer expressly reserves the right to make modifications, revisions, and changes it deems desirable in its sole and absolute discretion. All depictions of appliances, counters, soffits, floor coverings and other matters of detail, including, without limitation, items of finish and decoration, are conceptual only and are not necessarily included in each Unit. The photographs contained in this brochure may be stock photography or have been taken off-site and are used to depict the spirit of the lifestyles to be achieved rather than any that may exist or that may be proposed and are merely intended as illustrations of the activities and concepts depicted therein. Views vary from each unit and there is no assurance of the views from any particular unit. Ceiling heights are measured from top of floor slab to underside of ceiling slab. Additionally, ceiling height measurements exclude those areas where any soffits, moldings, drop and/or suspended ceilings and/or light fixtures may be installed. As such, the referenced ceiling height may not represent actual ceiling clearance. Many services provided will be offered on an a la carte basis, with charges for use required. Consult your Agreement and the Prospectus for the items included with the Unit. Dimensions and square footage are approximate and may vary with actual construction. The project graphics, renderings and text provided herein are copyrighted works owned by the developer. All rights reserved. Unauthorized reproduction, display or other dissemination of such materials is strictly prohibited and constitutes copyright infringement. No real estate broker is authorized to make any representations or other statements regarding the projects, and no agreements with, deposits paid to or other arrangements made with any real estate broker are or shall be binding on the developer. All prices are subject to change at any time and without notice, and do not include optional features or premiums for upgraded units. From time to time, price changes may have occurred that are not yet reflected on this brochure. Please check with the sales center for the most current pricing. Stated dimensions are measured to the exterior boundaries of the exterior walls and the centerline of interior demising walls and in fact vary from the dimensions that would be determined by using the description and definition of the "Unit" set forth in the Declaration (which generally only includes the interior air space between the perimeter walls and excludes interior structural components). For your reference, the area of the Unit, determined in accordance with those defined unit boundaries, is set forth on Exhibit 3 of the Declaration. Note that measurements of rooms set forth on this floor plan are generally taken at the greatest points of each given room(as if the room were a perfect rectangle), without regard for any cutouts. Accordingly, the area of the actual room will typically be smaller than the product obtained by multiplying the stated length times width. All dimensions are approximate and may vary with actual construction, and all floor plans and development plans are subject to change.



DO | DOUBLE OVEN
FR | FREEZER
P | PANTRY
REF | REFRIGERATOR
WC | WINE COOLER
WIC | WALK-IN CLOSET
WD | WASHER/DRYER
PR | POWDER ROOM

THE RESIDENCES AT

1428 BRICKELL

RESIDENCE A NORTH

2 BEDROOMS | 3 BATHROOMS

DEN | SUNRISE TERRACE | SUMMER KITCHEN

INTERIOR AREA: 1,796 SF / 167 SM

EXTERIOR AREA: 424 SF / 39 SM

TOTAL AREA: 2,220 SF / 206 SM

- One-of-a-kind Antonio Citterio designed interiors

–Double-door entry from private foyer

–Private elevator foyer

–Each home faces east towards Biscayne Bay

–11' ceiling heights

–Expansive great room and bedrooms

–En-suite bathroom in all bedrooms

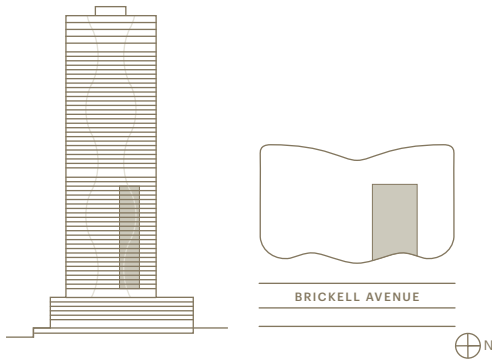
–Antonio Citterio-designed closets

–Dual private water closets with high efficiency smart toilets

–Arclinea kitchen with Gaggenau appliances

–Large east-facing terrace

–Summer kitchen



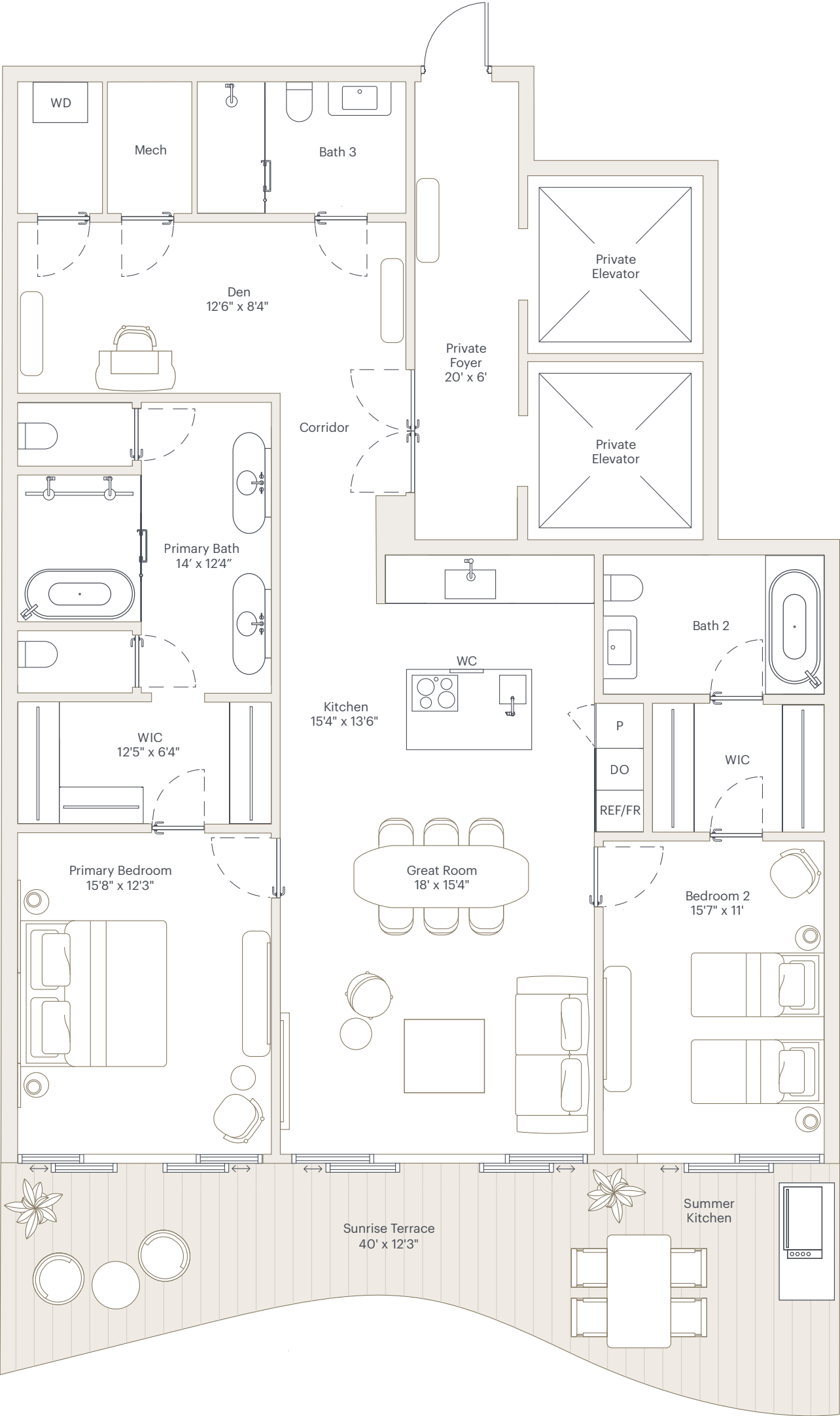
+ 1 305 706 1428 | info@1428brickell.com | 1428brickell.com

ORAL REPRESENTATIONS CANNOT BE RELIED UPON AS CORRECTLY STATING THE REPRESENTATIONS OF THE DEVELOPER. FOR CORRECT REPRESENTATIONS, MAKE REFERENCE TO THIS BROCHURE AND TO THE DOCUMENTS REQUIRED BY SECTION 718.503, FLORIDA STATUTES, TO BE FURNISHED BY A DEVELOPER TO A BUYER OR LESSEE.

WE ARE PLEDGED TO THE LETTER AND SPIRIT OF THE U.S. POLICY FOR ACHIEVEMENT OF EQUAL HOUSING OPPORTUNITY THROUGHOUT THE NATION. WE ENCOURAGE AND SUPPORT AN AFFIRMATIVE ADVERTISING AND MARKETING PROGRAM IN WHICH THERE ARE NO BARRIERS TO OBTAINING HOUSING BECAUSE OF RACE, COLOR, RELIGION, SEX, HANDICAP, FAMILIAL STATUS OR NATIONAL ORIGIN.

Please note that the Developer is Ytech - 1428 Brickell, LLC.

This is not intended to be an offer to sell, or solicitation to buy, condominium units to residents of any jurisdiction where prohibited by law, and your eligibility for purchase will depend upon your state of residency. This offering is made only by the prospectus for the condominium and no statement should be relied upon if not made in the prospectus. The sketches, renderings, graphic materials, plans, specifications, terms, conditions and statements contained in this brochure are proposed only, and the Developer reserves the right to modify, revise or withdraw any or all of same in its sole discretion and without prior notice. All improvements, designs and construction are subject to first obtaining the appropriate federal, state and local permits and approvals for same. These drawings and depictions are conceptual only and are for the convenience of reference and including artists renderings. They should not be relied upon as representations, express or implied, of the final detail of the residences or the Condominium. The developer expressly reserves the right to make modifications, revisions, and changes it deems desirable in its sole and absolute discretion. All depictions of appliances, counters, soffits, floor coverings and other matters of detail, including, without limitation, items of finish and decoration, are conceptual only and are not necessarily included in each Unit. The photographs contained in this brochure may be stock photography or have been taken off-site and are used to depict the spirit of the lifestyles to be achieved rather than any that may exist or that may be proposed and are merely intended as illustrations of the activities and concepts depicted therein. Views vary from each unit and there is no assurance of the views from any particular unit. Ceiling heights are measured from top of floor slab to underside of ceiling slab. Additionally, ceiling height measurements exclude those areas where any soffits, moldings, drop and/or suspended ceilings and/or light fixtures may be installed. As such, the referenced ceiling height may not represent actual ceiling clearance. Many services provided will be offered on an a la carte basis, with charges for use required. Consult your Agreement and the Prospectus for the items included with the Unit. Dimensions and square footage are approximate and may vary with actual construction. The project graphics, renderings and text provided herein are copyrighted works owned by the developer. All rights reserved. Unauthorized reproduction, display or other dissemination of such materials is strictly prohibited and constitutes copyright infringement. No real estate broker is authorized to make any representations or other statements regarding the projects, and no agreements with, deposits paid to or other arrangements made with any real estate broker are or shall be binding on the developer. All prices are subject to change at any time and without notice, and do not include optional features or premiums for upgraded units. From time to time, price changes may have occurred that are not yet reflected on this brochure. Please check with the sales center for the most current pricing. Stated dimensions are measured to the exterior boundaries of the exterior walls and the centerline of interior demising walls and in fact vary from the dimensions that would be determined by using the description and definition of the "Unit" set forth in the Declaration (which generally only includes the interior air space between the perimeter walls and excludes interior structural components). For your reference, the area of the Unit, determined in accordance with those defined unit boundaries, is set forth on Exhibit 3 of the Declaration. Note that measurements of rooms set forth on this floor plan are generally taken at the greatest points of each given room(as if the room were a perfect rectangle), without regard for any cutouts. Accordingly, the area of the actual room will typically be smaller than the product obtained by multiplying the stated length times width. All dimensions are approximate and may vary with actual construction, and all floor plans and development plans are subject to change.



- DO | DOUBLE OVEN
- FR | FREEZER
- P | PANTRY
- REF | REFRIGERATOR
- WC | WINE COOLER
- WIC | WALK-IN CLOSET
- WD | WASHER/DRYER
- PR | POWDER ROOM

THE RESIDENCES AT

1428 BRICKELL

RESIDENCE B

2 BEDROOMS | 2 BATHROOMS

TWO-STORY RESIDENCE | POWDER ROOM

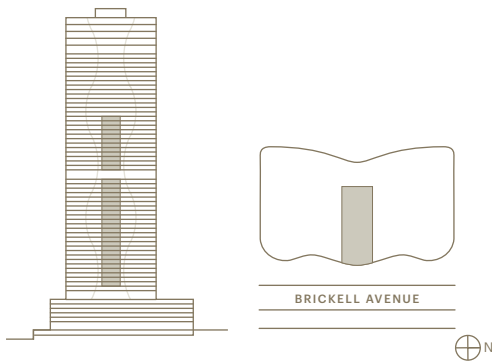
2 SUNRISE TERRACES | SUMMER KITCHEN

INTERIOR AREA: 2,314 SF / 215 SM

EXTERIOR AREA: 730 SF / 68 SM

TOTAL AREA: 3,044 SF / 283 SM

- One-of-a-kind Antonio Citterio designed interiors
- Double-door entry from private foyer
- Private elevator foyer
- Each home faces east towards Biscayne Bay
- 11' ceiling heights
- Expansive great room and bedrooms
- En-suite bathroom in all bedrooms
- Antonio Citterio-designed closets
- Dual private water closets with high efficiency smart toilets
- Arclinea kitchen with Gaggenau appliances
- Large east-facing terraces
- Summer kitchen



+ 1 305 706 1428 | INFO@1428BRICKELL.COM | 1428BRICKELL.COM

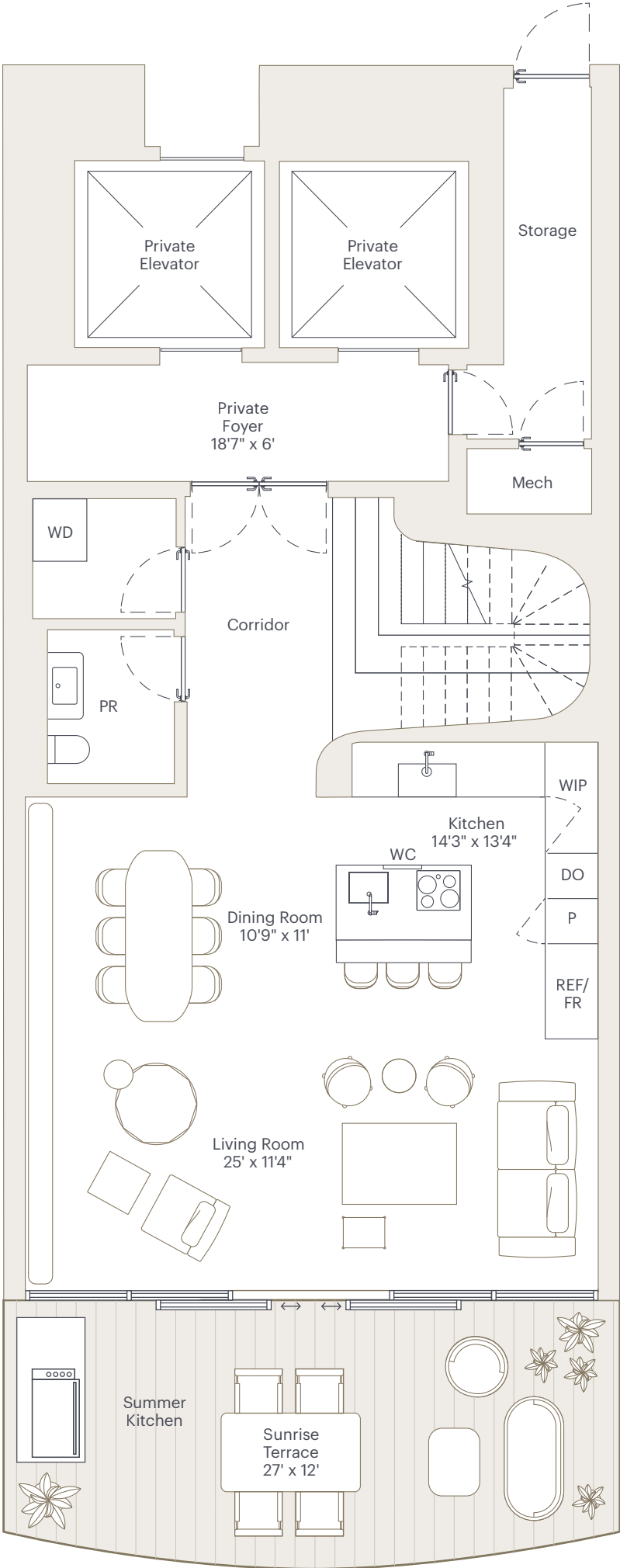
ORAL REPRESENTATIONS CANNOT BE RELIED UPON AS CORRECTLY STATING THE REPRESENTATIONS OF THE DEVELOPER. FOR CORRECT REPRESENTATIONS, MAKE REFERENCE TO THIS BROCHURE AND TO THE DOCUMENTS REQUIRED BY SECTION 718.503, FLORIDA STATUTES, TO BE FURNISHED BY A DEVELOPER TO A BUYER OR LESSEE.

WE ARE PLEDGED TO THE LETTER AND SPIRIT OF THE U.S. POLICY FOR ACHIEVEMENT OF EQUAL HOUSING OPPORTUNITY THROUGHOUT THE NATION. WE ENCOURAGE AND SUPPORT AN AFFIRMATIVE ADVERTISING AND MARKETING PROGRAM IN WHICH THERE ARE NO BARRIERS TO OBTAINING HOUSING BECAUSE OF RACE, COLOR, RELIGION, SEX, HANDICAP, FAMILIAL STATUS OR NATIONAL ORIGIN.

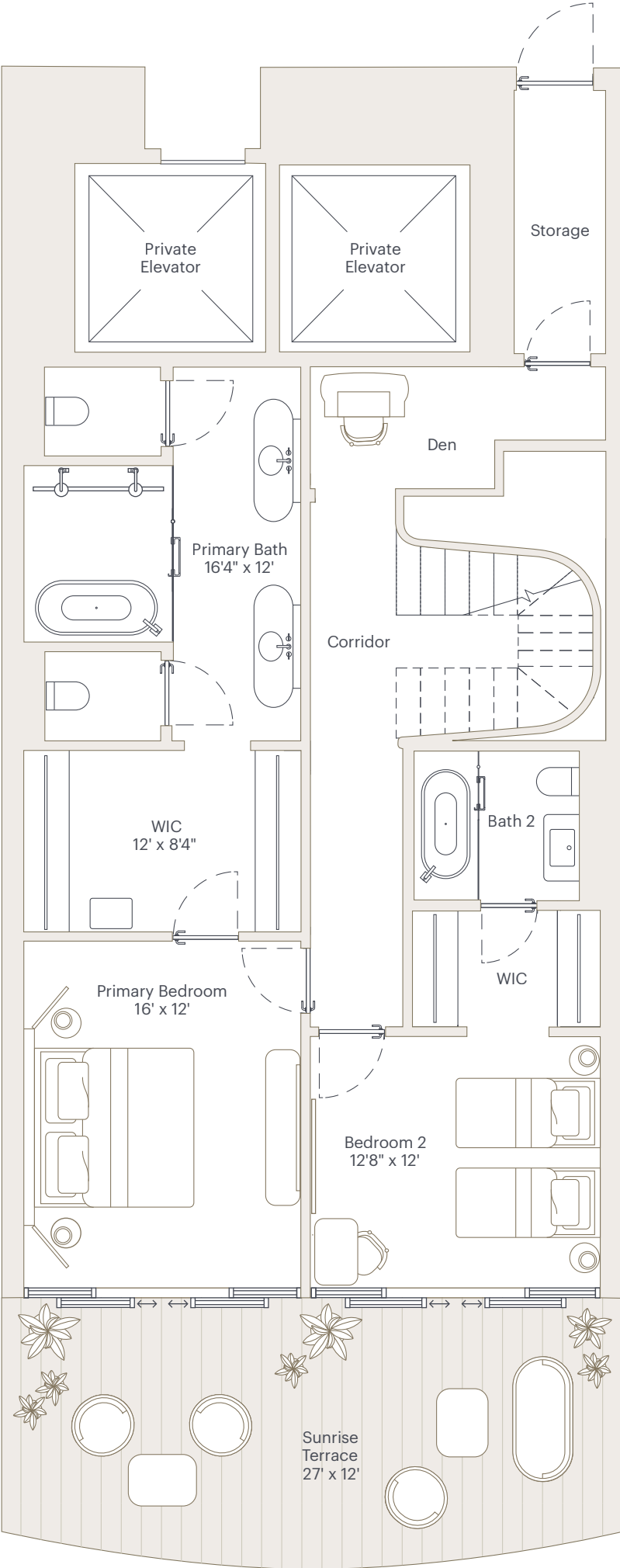
Please note that the Developer is Ytech - 1428 Brickell, LLC.

This is not intended to be an offer to sell, or solicitation to buy, condominium units to residents of any jurisdiction where prohibited by law, and your eligibility for purchase will depend upon your state of residency. This offering is made only by the prospectus for the condominium and no statement should be relied upon if not made in the prospectus. The sketches, renderings, graphic materials, plans, specifications, terms, conditions and statements contained in this brochure are proposed only, and the Developer reserves the right to modify, revise or withdraw any or all of same in its sole discretion and without prior notice. All improvements, designs and construction are subject to first obtaining the appropriate federal, state and local permits and approvals for same. These drawings and depictions are conceptual only and are for the convenience of reference and including artists renderings. They should not be relied upon as representations, express or implied, of the final detail of the residences or the Condominium. The developer expressly reserves the right to make modifications, revisions, and changes it deems desirable in its sole and absolute discretion. All depictions of appliances, counters, soffits, floor coverings and other matters of detail, including, without limitation, items of finish and decoration, are conceptual only and are not necessarily included in each Unit. The photographs contained in this brochure may be stock photography or have been taken off-site and are used to depict the spirit of the lifestyles to be achieved rather than any that may exist or that may be proposed and are merely intended as illustrations of the activities and concepts depicted therein. Views vary from each unit and there is no assurance of the views from any particular unit. Ceiling heights are measured from top of floor slab to underside of ceiling slab. Additionally, ceiling height measurements exclude those areas where any soffits, moldings, drop and/or suspended ceilings and/or light fixtures may be installed. As such, the referenced ceiling height may not represent actual ceiling clearance. Many services provided will be offered on an a la carte basis, with charges for use required. Consult your Agreement and the Prospectus for the items included with the Unit. Dimensions and square footage are approximate and may vary with actual construction. The project graphics, renderings and text provided herein are copyrighted works owned by the developer. All rights reserved. Unauthorized reproduction, display or other dissemination of such materials is strictly prohibited and constitutes copyright infringement. No real estate broker is authorized to make any representations or other statements regarding the projects, and no agreements with, deposits paid to or other arrangements made with any real estate broker are or shall be binding on the developer. All prices are subject to change at any time and without notice, and do not include optional features or premiums for upgraded units. From time to time, price changes may have occurred that are not yet reflected on this brochure. Please check with the sales center for the most current pricing. Stated dimensions are measured to the exterior boundaries of the exterior walls and the centerline of interior demising walls and in fact vary from the dimensions that would be determined by using the description and definition of the "Unit" set forth in the Declaration (which generally only includes the interior air space between the perimeter walls and excludes interior structural components). For your reference, the area of the Unit, determined in accordance with those defined unit boundaries, is set forth on Exhibit 3 of the Declaration. Note that measurements of rooms set forth on this floor plan are generally taken at the greatest points of each given room(as if the room were a perfect rectangle), without regard for any cutouts. Accordingly, the area of the actual room will typically be smaller than the product obtained by multiplying the stated length times width. All dimensions are approximate and may vary with actual construction, and all floor plans and development plans are subject to change.

- DO | DOUBLE OVEN
- FR | FREEZER
- P | PANTRY
- REF | REFRIGERATOR
- WC | WINE COOLER
- WIC | WALK-IN CLOSET
- WIP | WALK-IN PANTRY
- WD | WASHER/DRYER
- PR | POWDER ROOM



FIRST FLOOR



SECOND FLOOR

THE RESIDENCES AT

1428 BRICKELL

RESIDENCE C SOUTH

3 BEDROOMS | 3 BATHROOMS

POWDER ROOM | DEN | SUNSET TERRACE

SUNRISE TERRACE | SUMMER KITCHEN

INTERIOR AREA: 2,756 SF / 256 SM

EXTERIOR AREA: 977 SF / 91 SM

TOTAL AREA: 3,733 SF / 347 SM

- One-of-a-kind Antonio Citterio designed interiors

–Double-door entry from private foyer

–Private elevator foyer

–Each home faces east towards Biscayne Bay

–11' ceiling heights

–Independent service entrance

–Expansive great room and bedrooms

–En-suite bathroom in all bedrooms

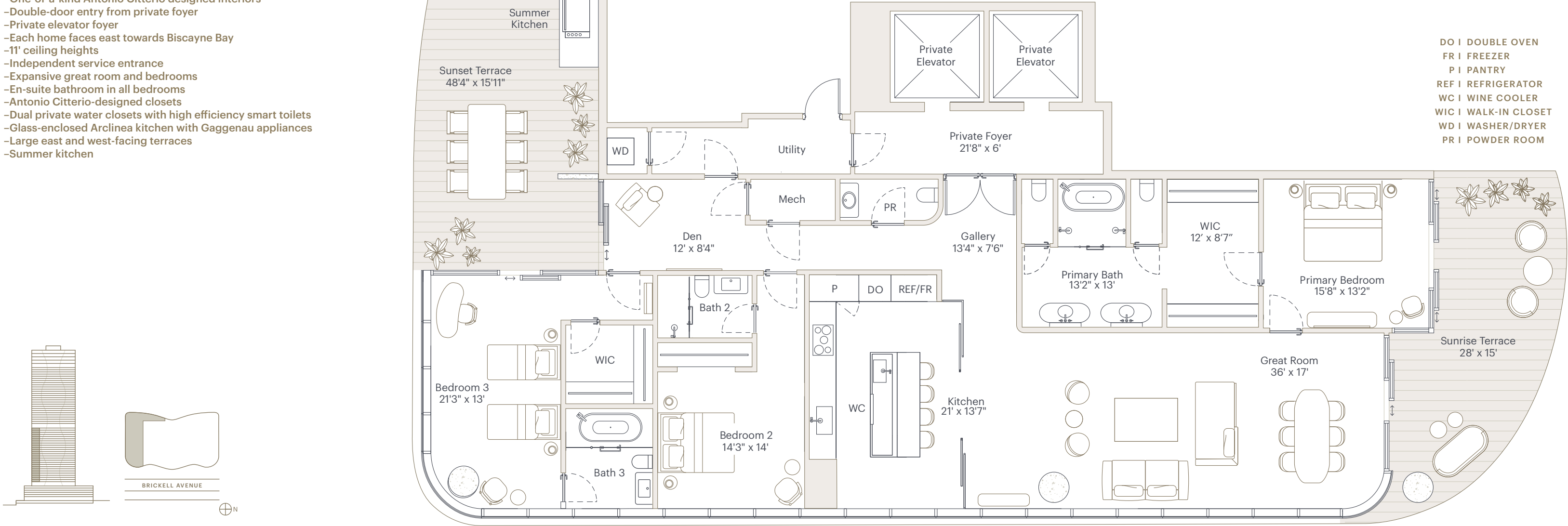
–Antonio Citterio-designed closets

–Dual private water closets with high efficiency smart toilets

–Glass-enclosed Arclinea kitchen with Gaggenau appliances

–Large east and west-facing terraces

–Summer kitchen



+ 1 305 706 1428 | info@1428brickell.com | 1428brickell.com

ORAL REPRESENTATIONS CANNOT BE RELIED UPON AS CORRECTLY STATING THE REPRESENTATIONS OF THE DEVELOPER. FOR CORRECT REPRESENTATIONS, MAKE REFERENCE TO THIS BROCHURE AND TO THE DOCUMENTS REQUIRED BY SECTION 718.503, FLORIDA STATUTES, TO BE FURNISHED BY A DEVELOPER TO A BUYER OR LESSEE.

WE ARE PLEDGED TO THE LETTER AND SPIRIT OF THE U.S. POLICY FOR ACHIEVEMENT OF EQUAL HOUSING OPPORTUNITY THROUGHOUT THE NATION. WE ENCOURAGE AND SUPPORT AN AFFIRMATIVE ADVERTISING AND MARKETING PROGRAM IN WHICH THERE ARE NO BARRIERS TO OBTAINING HOUSING BECAUSE OF RACE, COLOR, RELIGION, SEX, HANDICAP, FAMILIAL STATUS OR NATIONAL ORIGIN.

Please note that the Developer is Ytech - 1428 Brickell, LLC. This is not intended to be an offer to sell, or solicitation to buy, condominium units to residents of any jurisdiction where prohibited by law, and your eligibility for purchase will depend upon your state of residency. This offering is made only by the prospectus for the condominium and no statement should be relied upon if not made in the prospectus. The sketches, renderings, graphic materials, plans, specifications, terms, conditions and statements contained in this brochure are proposed only, and the Developer reserves the right to modify, revise or withdraw any or all of same in its sole discretion and without prior notice. All improvements, designs and construction are subject to first obtaining the appropriate federal, state and local permits and approvals for same. These drawings and depictions are conceptual only and are for the convenience of reference and including artists renderings. They should not be relied upon as representations, express or implied, of the final detail of the residences or the Condominium. The developer expressly reserves the right to make modifications, revisions, and changes it deems desirable in its sole and absolute discretion. All depictions of appliances, counters, soffits, floor coverings and other matters of detail, including, without limitation, items of finish and decoration, are conceptual only and are not necessarily included in each Unit. The photographs contained in this brochure may be stock photography or have been taken off-site and are used to depict the spirit of the lifestyles to be achieved rather than any that may exist or that may be proposed and are merely intended as illustrations of the activities and concepts depicted therein. Views vary from each unit and there is no assurance of the views from any particular unit. Ceiling heights are measured from top of floor slab to underside of ceiling slab. Additionally, ceiling height measurements exclude those areas where any soffits, moldings, drop and/or suspended ceilings and/or light fixtures may be installed. As such, the referenced ceiling height may not represent actual ceiling clearance. Many services provided will be offered on an a la carte basis, with charges for use required. Consult your Agreement and the Prospectus for the items included with the Unit. Dimensions and square footage are approximate and may vary with actual construction. The project graphics, renderings and text provided herein are copyrighted works owned by the developer. All rights reserved. Unauthorized reproduction, display or other dissemination of such materials is strictly prohibited and constitutes copyright infringement. No real estate broker is authorized to make any representations or other statements regarding the projects, and no agreements with, deposits paid to or other arrangements made with any real estate broker are or shall be binding on the developer. All prices are subject to change at any time and without notice, and do not include optional features or premiums for upgraded units. From time to time, price changes may have occurred that are not yet reflected on this brochure. Please check with the sales center for the most current pricing. Stated dimensions are measured to the exterior boundaries of the exterior walls and the centerline of interior demising walls and in fact vary from the dimensions that would be determined by using the description and definition of the "Unit" set forth in the Declaration (which generally only includes the interior air space between the perimeter walls and excludes interior structural components). For your reference, the area of the Unit, determined in accordance with those defined unit boundaries, is set forth on Exhibit 3 of the Declaration. Note that measurements of rooms set forth on this floor plan are generally taken at the greatest points of each given room(as if the room were a perfect rectangle), without regard for any cutouts. Accordingly, the area of the actual room will typically be smaller than the product obtained by multiplying the stated length times width. All dimensions are approximate and may vary with actual construction, and all floor plans and development plans are subject to change.

THE RESIDENCES AT

1428 BRICKELL

RESIDENCE C NORTH

3 BEDROOMS | 3 BATHROOMS

POWDER ROOM | DEN | SUNSET TERRACE

SUNRISE TERRACE | SUMMER KITCHEN

INTERIOR AREA: 2,790 SF / 259 SM

EXTERIOR AREA: 977 SF / 91 SM

TOTAL AREA: 3,767 SF / 350 SM

- One-of-a-kind Antonio Citterio designed interiors

-Double-door entry from private foyer

-Private elevator foyer

-Each home faces east towards Biscayne Bay

-11' ceiling heights

-Independent service entrance

-Expansive great room and bedrooms

-En-suite bathroom in all bedrooms

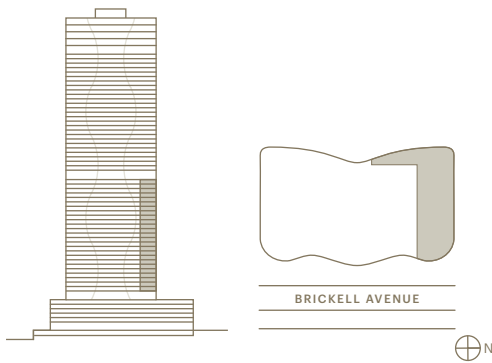
-Antonio Citterio-designed closets

-Dual private water closets with high efficiency smart toilets

-Glass-enclosed Arclinea kitchen with Gaggenau appliances

-Large east and west-facing terraces

-Summer kitchen

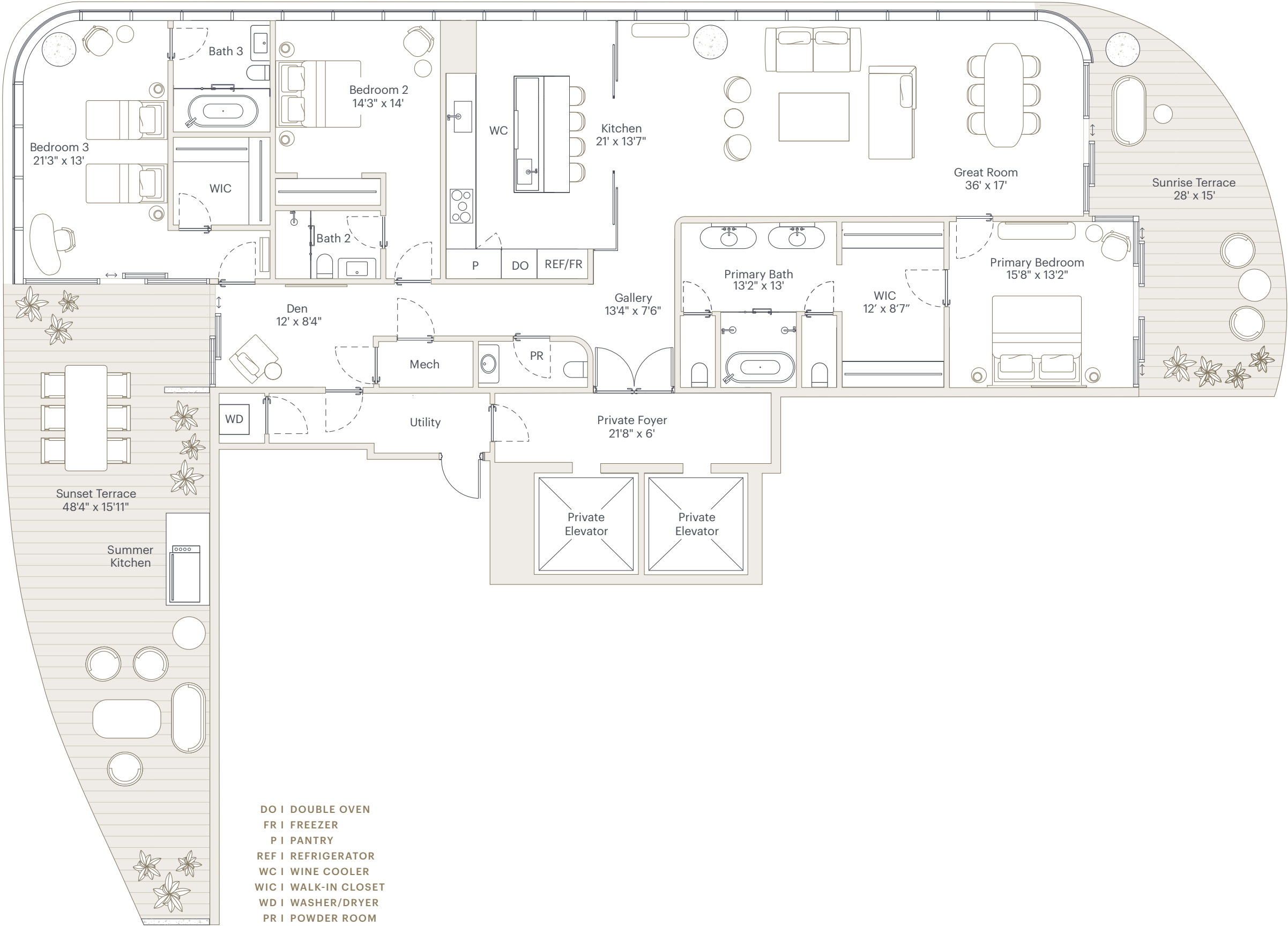


+ 1 305 706 1428 | info@1428brickell.com | 1428brickell.com

ORAL REPRESENTATIONS CANNOT BE RELIED UPON AS CORRECTLY STATING THE REPRESENTATIONS OF THE DEVELOPER. FOR CORRECT REPRESENTATIONS, MAKE REFERENCE TO THIS BROCHURE AND TO THE DOCUMENTS REQUIRED BY SECTION 718.503, FLORIDA STATUTES, TO BE FURNISHED BY A DEVELOPER TO A BUYER OR LESSEE.

WE ARE PLEDGED TO THE LETTER AND SPIRIT OF THE U.S. POLICY FOR ACHIEVEMENT OF EQUAL HOUSING OPPORTUNITY THROUGHOUT THE NATION. WE ENCOURAGE AND SUPPORT AN AFFIRMATIVE ADVERTISING AND MARKETING PROGRAM IN WHICH THERE ARE NO BARRIERS TO OBTAINING HOUSING BECAUSE OF RACE, COLOR, RELIGION, SEX, HANDICAP, FAMILIAL STATUS OR NATIONAL ORIGIN.

Please note that the Developer is Ytech - 1428 Brickell, LLC. This is not intended to be an offer to sell, or solicitation to buy, condominium units to residents of any jurisdiction where prohibited by law, and your eligibility for purchase will depend upon your state of residency. This offering is made only by the prospectus for the condominium and no statement should be relied upon if not made in the prospectus. The sketches, renderings, graphic materials, plans, specifications, terms, conditions and statements contained in this brochure are proposed only, and the Developer reserves the right to modify, revise or withdraw any or all of same in its sole discretion and without prior notice. All improvements, designs and construction are subject to first obtaining the appropriate federal, state and local permits and approvals for same. These drawings and depictions are conceptual only and are for the convenience of reference and including artists renderings. They should not be relied upon as representations, express or implied, of the final detail of the residences or the Condominium. The developer expressly reserves the right to make modifications, revisions, and changes it deems desirable in its sole and absolute discretion. All depictions of appliances, counters, soffits, floor coverings and other matters of detail, including, without limitation, items of finish and decoration, are conceptual only and are not necessarily included in each Unit. The photographs contained in this brochure may be stock photography or have been taken off-site and are used to depict the spirit of the lifestyles to be achieved rather than any that may exist or that may be proposed and are merely intended as illustrations of the activities and concepts depicted therein. Views vary from each unit and there is no assurance of the views from any particular unit. Ceiling heights are measured from top of floor slab to underside of ceiling slab. Additionally, ceiling height measurements exclude those areas where any soffits, moldings, drop and/or suspended ceilings may be installed. As such, the referenced ceiling height may not represent actual ceiling clearance. Many services provided will be offered on an a la carte basis, with charges for use required. Consult your Agreement and the Prospectus for the items included with the Unit. Dimensions and square footage are approximate and may vary with actual construction. The project graphics, renderings and text provided herein are copyrighted works owned by the developer. All rights reserved. Unauthorized reproduction, display or other dissemination of such materials is strictly prohibited and constitutes copyright infringement. No real estate broker is authorized to make any representations or other statements regarding the projects, and no agreements with, deposits paid to or other arrangements made with any real estate broker are or shall be binding on the developer. All prices are subject to change at any time and without notice, and do not include optional features or premiums for upgraded units. From time to time, price changes may have occurred that are not yet reflected on this brochure. Please check with the sales center for the most current pricing. Stated dimensions are measured to the exterior boundaries of the exterior walls and the centerline of interior demising walls and in fact vary from the dimensions that would be determined by using the description and definition of the "Unit" set forth in the Declaration (which generally only includes the interior air space between the perimeter walls and excludes interior structural components). For your reference, the area of the Unit, determined in accordance with those defined unit boundaries, is set forth on Exhibit 3 of the Declaration. Note that measurements of rooms set forth on this floor plan are generally taken at the greatest points of each given room(as if the room were a perfect rectangle), without regard for any cutouts. Accordingly, the area of the actual room will typically be smaller than the product obtained by multiplying the stated length times width. All dimensions are approximate and may vary with actual construction, and all floor plans and development plans are subject to change.



THE RESIDENCES AT

1428 BRICKELL

RESIDENCE D SOUTH

4 BEDROOMS | 4 BATHROOMS

POWDER ROOM | DEN | SUNRISE TERRACE

SUMMER KITCHEN

INTERIOR AREA: 3,436 SF / 319 SM

EXTERIOR AREA: 356 SF / 33 SM

TOTAL AREA: 3,792 SF / 352 SM

- One-of-a-kind Antonio Citterio designed interiors

-Double-door entry from private foyer

-Private elevator foyer

-Each home faces east towards Biscayne Bay

-11' ceiling heights

-Independent service entrance

-Expansive great room and bedrooms

-En-suite bathroom in all bedrooms

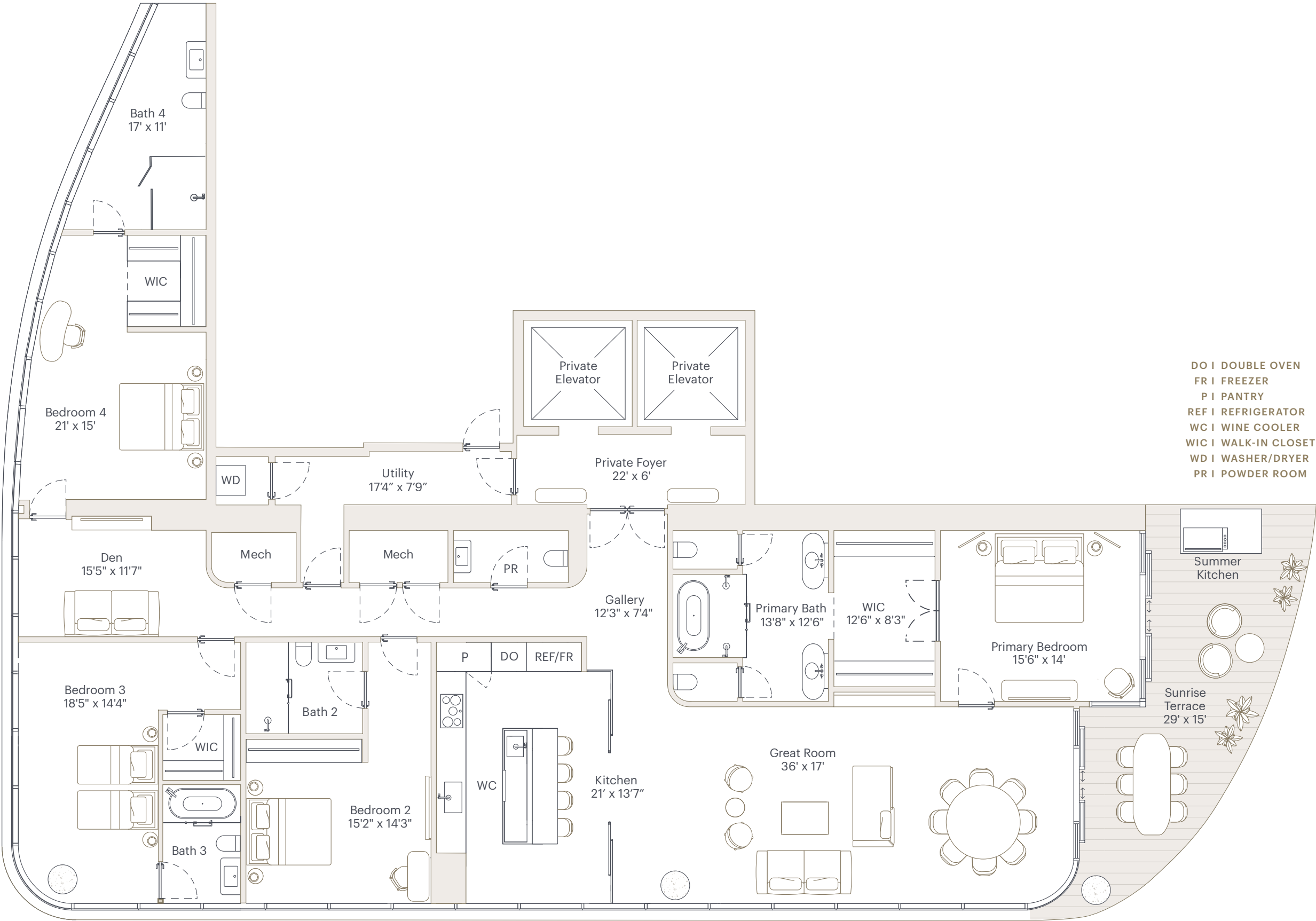
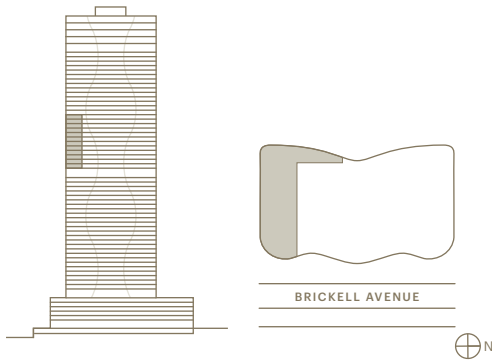
-Antonio Citterio-designed closets

-Dual private water closets with high efficiency smart toilets

-Glass-enclosed Arclinea kitchen with Gaggenau appliances

-Large east-facing terrace

-Summer kitchen



+ 1 305 706 1428 | [info@1428BRICKELL.COM](mailto:info@1428brickell.com) | 1428BRICKELL.COM

ORAL REPRESENTATIONS CANNOT BE RELIED UPON AS CORRECTLY STATING THE REPRESENTATIONS OF THE DEVELOPER. FOR CORRECT REPRESENTATIONS, MAKE REFERENCE TO THIS BROCHURE AND TO THE DOCUMENTS REQUIRED BY SECTION 718.503, FLORIDA STATUTES, TO BE FURNISHED BY A DEVELOPER TO A BUYER OR LESSEE.

WE ARE PLEDGED TO THE LETTER AND SPIRIT OF THE U.S. POLICY FOR ACHIEVEMENT OF EQUAL HOUSING OPPORTUNITY THROUGHOUT THE NATION. WE ENCOURAGE AND SUPPORT AN AFFIRMATIVE ADVERTISING AND MARKETING PROGRAM IN WHICH THERE ARE NO BARRIERS TO OBTAINING HOUSING BECAUSE OF RACE, COLOR, RELIGION, SEX, HANDICAP, FAMILIAL STATUS OR NATIONAL ORIGIN.

Please note that the Developer is Ytech - 1428 Brickell, LLC. This is not intended to be an offer to sell, or solicitation to buy, condominium units to residents of any jurisdiction where prohibited by law, and your eligibility for purchase will depend upon your state of residency. This offering is made only by the prospectus for the condominium and no statement should be relied upon if not made in the prospectus. The sketches, renderings, graphic materials, plans, specifications, terms, conditions and statements contained in this brochure are proposed only, and the Developer reserves the right to modify, revise or withdraw any or all of same in its sole discretion and without prior notice. All improvements, designs and construction are subject to first obtaining the appropriate federal, state and local permits and approvals for same. These drawings and depictions are conceptual only and are for the convenience of reference and including artists renderings. They should not be relied upon as representations, express or implied, of the final detail of the residences or the Condominium. The developer expressly reserves the right to make modifications, revisions, and changes it deems desirable in its sole and absolute discretion. All depictions of appliances, counters, soffits, floor coverings and other matters of detail, including, without limitation, items of finish and decoration, are conceptual only and are not necessarily included in each Unit. The photographs contained in this brochure may be stock photography or have been taken off-site and are used to depict the spirit of the lifestyles to be achieved rather than any that may exist or that may be proposed and are merely intended as illustrations of the activities and concepts depicted therein. Views vary from each unit and there is no assurance of the views from any particular unit. Ceiling heights are measured from top of floor slab to underside of ceiling slab. Additionally, ceiling height measurements exclude those areas where any soffits, moldings, drop and/or suspended ceilings and/or light fixtures may be installed. As such, the referenced ceiling height may not represent actual ceiling clearance. Many services provided will be offered on an a la carte basis, with charges for use required. Consult your Agreement and the Prospectus for the items included with the Unit. Dimensions and square footage are approximate and may vary with actual construction. The project graphics, renderings and text provided herein are copyrighted works owned by the developer. All rights reserved. Unauthorized reproduction, display or other dissemination of such materials is strictly prohibited and constitutes copyright infringement. No real estate broker is authorized to make any representations or other statements regarding the projects, and no agreements with, deposits paid to or other arrangements made with any real estate broker are or shall be binding on the developer. All prices are subject to change at any time and without notice, and do not include optional features or premiums for upgraded units. From time to time, price changes may have occurred that are not yet reflected on this brochure. Please check with the sales center for the most current pricing. Stated dimensions are measured to the exterior boundaries of the exterior walls and in fact vary from the dimensions that would be determined by using the description and definition of the "Unit" set forth in the Declaration (which generally only includes the interior air space between the perimeter walls and excludes interior structural components). For your reference, the area of the Unit, determined in accordance with those defined unit boundaries, is set forth on Exhibit 3 of the Declaration. Note that measurements of rooms set forth on this floor plan are generally taken at the greatest points of each given room(as if the room were a perfect rectangle), without regard for any cutouts. Accordingly, the area of the actual room will typically be smaller than the product obtained by multiplying the stated length times width. All dimensions are approximate and may vary with actual construction, and all floor plans and development plans are subject to change.

THE RESIDENCES AT

1428 BRICKELL

RESIDENCE D NORTH

4 BEDROOMS | 4 BATHROOMS

POWDER ROOM | DEN | SUNRISE TERRACE

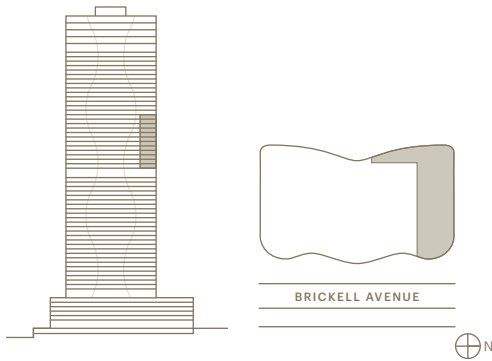
SUMMER KITCHEN

INTERIOR AREA: 3,467 SF / 322 SM

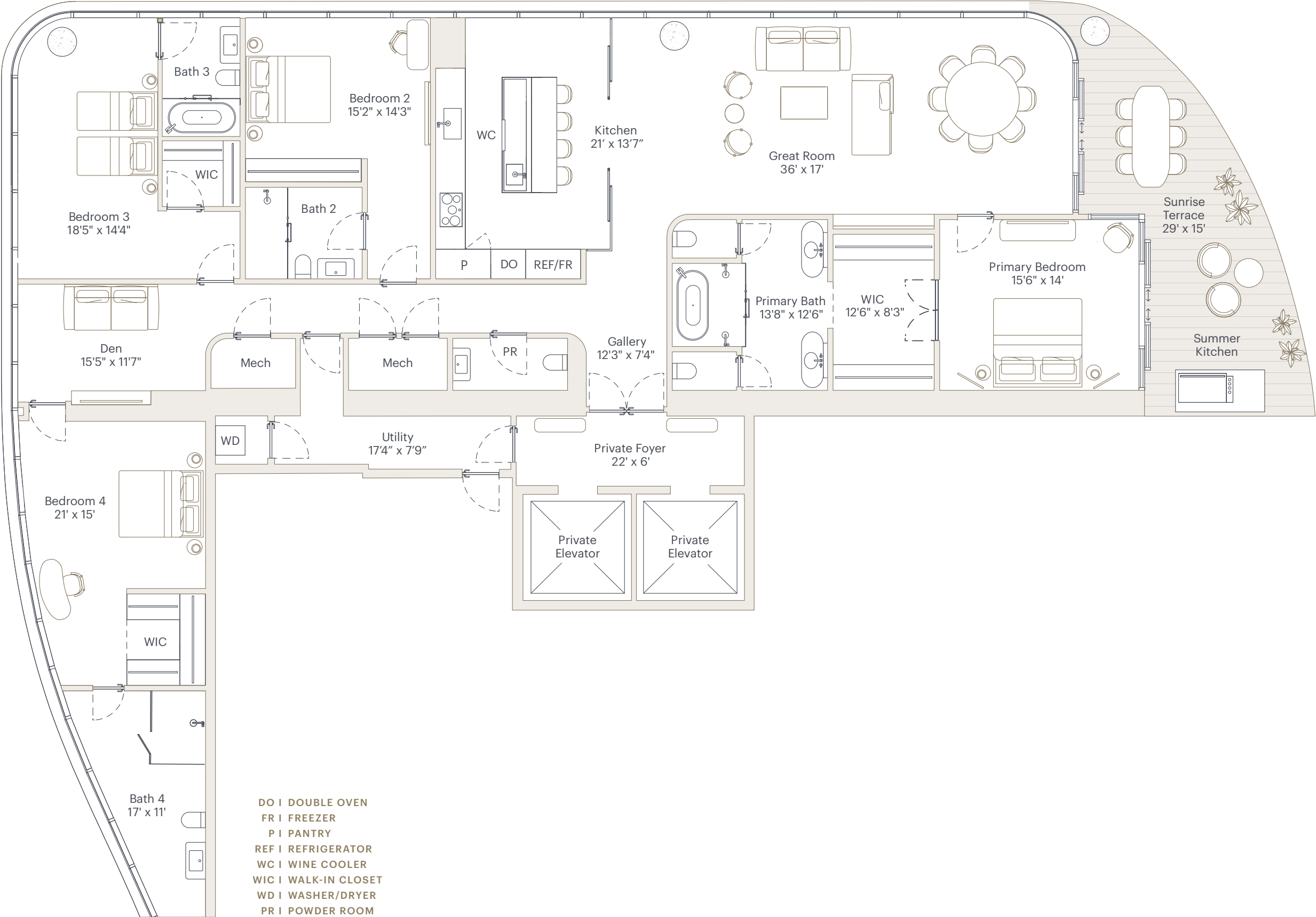
EXTERIOR AREA: 356 SF / 33 SM

TOTAL AREA: 3,823 SF / 355 SM

- One-of-a-kind Antonio Citterio designed interiors
- Double-door entry from private foyer
- Private elevator foyer
- Each home faces east towards Biscayne Bay
- 11' ceiling heights
- Independent service entrance
- Expansive great room and bedrooms
- En-suite bathroom in all bedrooms
- Antonio Citterio-designed closets
- Dual private water closets with high efficiency smart toilets
- Glass-enclosed Arclinea kitchen with Gaggenau appliances
- Large east-facing terrace
- Summer kitchen



+ 1 305 706 1428 | info@1428brickell.com | 1428brickell.com



ORAL REPRESENTATIONS CANNOT BE RELIED UPON AS CORRECTLY STATING THE REPRESENTATIONS OF THE DEVELOPER. FOR CORRECT REPRESENTATIONS, MAKE REFERENCE TO THIS BROCHURE AND TO THE DOCUMENTS REQUIRED BY SECTION 718.503, FLORIDA STATUTES, TO BE FURNISHED BY A DEVELOPER TO A BUYER OR LESSEE.

WE ARE PLEDGED TO THE LETTER AND SPIRIT OF THE U.S. POLICY FOR ACHIEVEMENT OF EQUAL HOUSING OPPORTUNITY THROUGHOUT THE NATION. WE ENCOURAGE AND SUPPORT AN AFFIRMATIVE ADVERTISING AND MARKETING PROGRAM IN WHICH THERE ARE NO BARRIERS TO OBTAINING HOUSING BECAUSE OF RACE, COLOR, RELIGION, SEX, HANDICAP, FAMILIAL STATUS OR NATIONAL ORIGIN.

Please note that the Developer is Ytech - 1428 Brickell, LLC. This is not intended to be an offer to sell, or solicitation to buy, condominium units to residents of any jurisdiction where prohibited by law, and your eligibility for purchase will depend upon your state of residency. This offering is made only by the prospectus for the condominium and no statement should be relied upon if not made in the prospectus. The sketches, renderings, graphic materials, plans, specifications, terms, conditions and statements contained in this brochure are proposed only, and the Developer reserves the right to modify, revise or withdraw any or all of same in its sole discretion and without prior notice. All improvements, designs and construction are subject to first obtaining the appropriate federal, state and local permits and approvals for same. These drawings and depictions are conceptual only and are for the convenience of reference and including artists renderings. They should not be relied upon as representations, express or implied, of the final detail of the residences or the Condominium. The developer expressly reserves the right to make modifications, revisions, and changes it deems desirable in its sole and absolute discretion. All depictions of appliances, counters, soffits, floor coverings and other matters of detail, including, without limitation, items of finish and decoration, are conceptual only and are not necessarily included in each Unit. The photographs contained in this brochure may be stock photography or have been taken off-site and are used to depict the spirit of the lifestyles to be achieved rather than any that may exist or that may be proposed and are merely intended as illustrations of the activities and concepts depicted therein. Views vary from each unit and there is no assurance of the views from any particular unit. Ceiling heights are measured from top of floor slab to underside of ceiling slab. Additionally, ceiling height measurements exclude those areas where any soffits, moldings, drop and/or suspended ceilings may be installed. As such, the referenced ceiling height may not represent actual ceiling clearance. Many services provided will be offered on an a la carte basis, with charges for use required. Consult your Agreement and the Prospectus for the items included with the Unit. Dimensions and square footage are approximate and may vary with actual construction. The project graphics, renderings and text provided herein are copyrighted works owned by the developer. All rights reserved. Unauthorized reproduction, display or other dissemination of such materials is strictly prohibited and constitutes copyright infringement. No real estate broker is authorized to make any representations or other statements regarding the projects, and no agreements with, deposits paid to or other arrangements made with any real estate broker are or shall be binding on the developer. All prices are subject to change at any time and without notice, and do not include optional features or premiums for upgraded units. From time to time, price changes may have occurred that are not yet reflected on this brochure. Please check with the sales center for the most current pricing. Stated dimensions are measured to the exterior boundaries of the exterior walls and the centerline of interior demising walls and in fact vary from the dimensions that would be determined by using the description and definition of the "Unit" set forth in the Declaration (which generally only includes the interior air space between the perimeter walls and excludes interior structural components). For your reference, the area of the Unit, determined in accordance with those defined unit boundaries, is set forth on Exhibit 3 of the Declaration. Note that measurements of rooms set forth on this floor plan are generally taken at the greatest points of each given room(as if the room were a perfect rectangle), without regard for any cutouts. Accordingly, the area of the actual room will typically be smaller than the product obtained by multiplying the stated length times width. All dimensions are approximate and may vary with actual construction, and all floor plans and development plans are subject to change.

THE RESIDENCES AT

1428 BRICKELL

RESIDENCE F SOUTH

4 BEDROOMS | 4 BATHROOMS

POWDER ROOM | DEN | STAFF QUARTERS

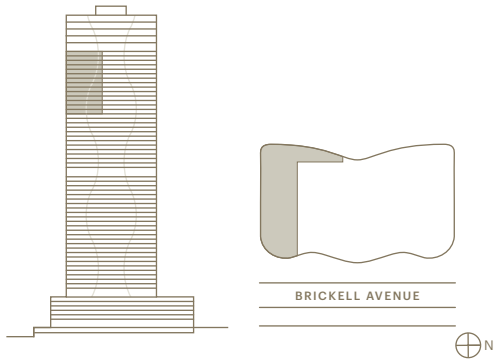
SUNRISE TERRACE | SUMMER KITCHEN

INTERIOR AREA: 4,171 SF / 387 SM

EXTERIOR AREA: 683 SF / 63 SM

TOTAL AREA: 4,854 SF / 450 SM

- One-of-a-kind Antonio Citterio designed interiors
- Double-door entry from private foyer
- Private elevator foyer
- Each home faces east towards Biscayne Bay
- 11' ceiling heights
- Independent service entrance
- Expansive great room and bedrooms
- En-suite bathroom in all bedrooms
- Antonio Citterio-designed closets
- Dual private water closets with high efficiency smart toilets
- Glass-enclosed Arclinea kitchen with Gaggenau appliances
- Large southeast-facing terrace
- Summer kitchen



+ 1 305 706 1428 | info@1428brickell.com | 1428brickell.com

ORAL REPRESENTATIONS CANNOT BE RELIED UPON AS CORRECTLY STATING THE REPRESENTATIONS OF THE DEVELOPER. FOR CORRECT REPRESENTATIONS, MAKE REFERENCE TO THIS BROCHURE AND TO THE DOCUMENTS REQUIRED BY SECTION 718.503, FLORIDA STATUTES, TO BE FURNISHED BY A DEVELOPER TO A BUYER OR LESSEE.

WE ARE PLEDGED TO THE LETTER AND SPIRIT OF THE U.S. POLICY FOR ACHIEVEMENT OF EQUAL HOUSING OPPORTUNITY THROUGHOUT THE NATION. WE ENCOURAGE AND SUPPORT AN AFFIRMATIVE ADVERTISING AND MARKETING PROGRAM IN WHICH THERE ARE NO BARRIERS TO OBTAINING HOUSING BECAUSE OF RACE, COLOR, RELIGION, SEX, HANDICAP, FAMILIAL STATUS OR NATIONAL ORIGIN.

Please note that the Developer is Ytech - 1428 Brickell, LLC. This is not intended to be an offer to sell, or solicitation to buy, condominium units to residents of any jurisdiction where prohibited by law, and your eligibility for purchase will depend upon your state of residency. This offering is made only by the prospectus for the condominium and no statement should be relied upon if not made in the prospectus. The sketches, renderings, graphic materials, plans, specifications, terms, conditions and statements contained in this brochure are proposed only, and the Developer reserves the right to modify, revise or withdraw any or all of same in its sole discretion and without prior notice. All improvements, designs and construction are subject to first obtaining the appropriate federal, state and local permits and approvals for same. These drawings and depictions are conceptual only and are for the convenience of reference and including artists renderings. They should not be relied upon as representations, express or implied, of the final detail of the residences or the Condominium. The developer expressly reserves the right to make modifications, revisions, and changes it deems desirable in its sole and absolute discretion. All depictions of appliances, counters, soffits, floor coverings and other matters of detail, including, without limitation, items of finish and decoration, are conceptual only and are not necessarily included in each Unit. The photographs contained in this brochure may be stock photography or have been taken off-site and are used to depict the spirit of the lifestyles to be achieved rather than any that may exist or that may be proposed and are merely intended as illustrations of the activities and concepts depicted therein. Views vary from each unit and there is no assurance of the views from any particular unit. Ceiling heights are measured from top of floor slab to underside of ceiling slab. Additionally, ceiling height measurements exclude those areas where any soffits, moldings, drop and/or suspended ceilings may be installed. As such, the referenced ceiling height may not represent actual ceiling clearance. Many services provided will be offered on an a la carte basis, with charges for use required. Consult your Agreement and the Prospectus for the items included with the Unit. Dimensions and square footage are approximate and may vary with actual construction. The project graphics, renderings and text provided herein are copyrighted works owned by the developer. All rights reserved. Unauthorized reproduction, display or other dissemination of such materials is strictly prohibited and constitutes copyright infringement. No real estate broker is authorized to make any representations or other statements regarding the projects, and no agreements with, deposits paid to or other arrangements made with any real estate broker are or shall be binding on the developer. All prices are subject to change at any time and without notice, and do not include optional features or premiums for upgraded units. From time to time, price changes may have occurred that are not yet reflected on this brochure. Please check with the sales center for the most current pricing. Stated dimensions are measured to the exterior boundaries of the exterior walls and the centerline of interior demising walls and in fact vary from the dimensions that would be determined by using the description and definition of the "Unit" set forth in the Declaration (which generally only includes the interior air space between the perimeter walls and excludes interior structural components). For your reference, the area of the Unit, determined in accordance with those defined unit boundaries, is set forth on Exhibit 3 of the Declaration. Note that measurements of rooms set forth on this floor plan are generally taken at the greatest points of each given room(as if the room were a perfect rectangle), without regard for any cutouts. Accordingly, the area of the actual room will typically be smaller than the product obtained by multiplying the stated length times width. All dimensions are approximate and may vary with actual construction, and all floor plans and development plans are subject to change.

THE RESIDENCES AT

1428 BRICKELL

RESIDENCE F NORTH

4 BEDROOMS | 4 BATHROOMS

POWDER ROOM | DEN | STAFF QUARTERS

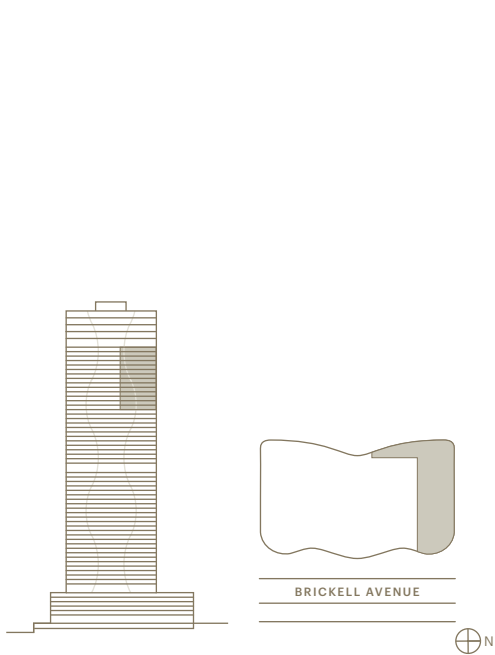
SUNRISE TERRACE | SUMMER KITCHEN

INTERIOR AREA: 4,171 SF / 387 SM

EXTERIOR AREA: 683 SF / 63 SM

TOTAL AREA: 4,854 SF / 450 SM

- One-of-a-kind Antonio Citterio designed interiors
- Double-door entry from private foyer
- Private elevator foyer
- Each home faces east towards Biscayne Bay
- 11' ceiling heights
- Independent service entrance
- Expansive great room and bedrooms
- En-suite bathroom in all bedrooms
- Antonio Citterio-designed closets
- Dual private water closets with high efficiency smart toilets
- Glass-enclosed Arclinea kitchen with Gaggenau appliances
- Large southeast-facing terrace
- Summer kitchen



+ 1 305 706 1428 | info@1428brickell.com | 1428brickell.com

ORAL REPRESENTATIONS CANNOT BE RELIED UPON AS CORRECTLY STATING THE REPRESENTATIONS OF THE DEVELOPER. FOR CORRECT REPRESENTATIONS, MAKE REFERENCE TO THIS BROCHURE AND TO THE DOCUMENTS REQUIRED BY SECTION 718.503, FLORIDA STATUTES, TO BE FURNISHED BY A DEVELOPER TO A BUYER OR LESSEE.

WE ARE PLEDGED TO THE LETTER AND SPIRIT OF THE U.S. POLICY FOR ACHIEVEMENT OF EQUAL HOUSING OPPORTUNITY THROUGHOUT THE NATION. WE ENCOURAGE AND SUPPORT AN AFFIRMATIVE ADVERTISING AND MARKETING PROGRAM IN WHICH THERE ARE NO BARRIERS TO OBTAINING HOUSING BECAUSE OF RACE, COLOR, RELIGION, SEX, HANDICAP, FAMILIAL STATUS OR NATIONAL ORIGIN.

Please note that the Developer is Ytech - 1428 Brickell, LLC. This is not intended to be an offer to sell, or solicitation to buy, condominium units to residents of any jurisdiction where prohibited by law, and your eligibility for purchase will depend upon your state of residency. This offering is made only by the prospectus for the condominium and no statement should be relied upon if not made in the prospectus. The sketches, renderings, graphic materials, plans, specifications, terms, conditions and statements contained in this brochure are proposed only, and the Developer reserves the right to modify, revise or withdraw any or all of same in its sole discretion and without prior notice. All improvements, designs and construction are subject to first obtaining the appropriate federal, state and local permits and approvals for same. These drawings and depictions are conceptual only and are for the convenience of reference and including artists renderings. They should not be relied upon as representations, express or implied, of the final detail of the residences or the Condominium. The developer expressly reserves the right to make modifications, revisions, and changes it deems desirable in its sole and absolute discretion. All depictions of appliances, counters, soffits, floor coverings and other matters of detail, including, without limitation, items of finish and decoration, are conceptual only and are not necessarily included in each Unit. The photographs contained in this brochure may be stock photography or have been taken off-site and are used to depict the spirit of the lifestyles to be achieved rather than any that may exist or that may be proposed and are merely intended as illustrations of the activities and concepts depicted therein. Views vary from each unit and there is no assurance of the views from any particular unit. Ceiling heights are measured from top of floor slab to underside of ceiling slab. Additionally, ceiling height measurements exclude those areas where any soffits, moldings, drop and/or suspended ceilings and/or light fixtures may be installed. As such, the referenced ceiling height may not represent actual ceiling clearance. Many services provided will be offered on an a la carte basis, with charges for use required. Consult your Agreement and the Prospectus for the items included with the Unit. Dimensions and square footage are approximate and may vary with actual construction. The project graphics, renderings and text provided herein are copyrighted works owned by the developer. All rights reserved. Unauthorized reproduction, display or other dissemination of such materials is strictly prohibited and constitutes copyright infringement. No real estate broker is authorized to make any representations or other statements regarding the projects, and no agreements with, deposits paid to or other arrangements made with any real estate broker are or shall be binding on the developer. All prices are subject to change at any time and without notice, and do not include optional features or premiums for upgraded units. From time to time, price changes may have occurred that are not yet reflected on this brochure. Please check with the sales center for the most current pricing. Stated dimensions are measured to the exterior boundaries of the exterior walls and the centerline of interior demising walls and in fact vary from the dimensions that would be determined by using the description and definition of the "Unit" set forth in the Declaration (which generally only includes the interior air space between the perimeter walls and excludes interior structural components). For your reference, the area of the Unit, determined in accordance with those defined unit boundaries, is set forth on Exhibit 3 of the Declaration. Note that measurements of rooms set forth on this floor plan are generally taken at the greatest points of each given room(as if the room were a perfect rectangle), without regard for any cutouts. Accordingly, the area of the actual room will typically be smaller than the product obtained by multiplying the stated length times width. All dimensions are approximate and may vary with actual construction, and all floor plans and development plans are subject to change.

THE RESIDENCES AT

1428 BRICKELL

RESIDENCE G

4 BEDROOMS | 4 BATHROOMS | POWDER ROOM

PRIVATE CINEMA | BUTLER'S KITCHEN | STAFF QUARTERS

WALK-IN PANTRY | DOUBLE WASHER / DRYER

600-BOTTLE WINE CELLAR | TWO-STORY RESIDENCE

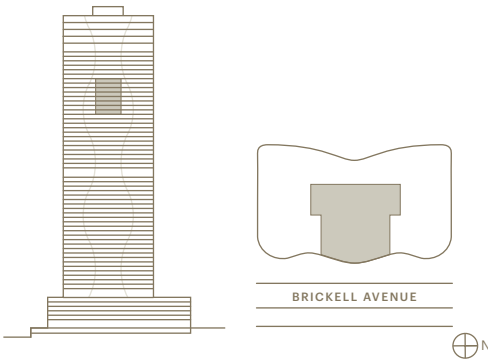
2 SUNRISE TERRACES | SUMMER KITCHEN

INTERIOR AREA: 6,686 SF / 621 SM

EXTERIOR AREA: 1,404 SF / 130 SM

TOTAL AREA: 8,090 SF / 751 SM

- Two-story residence featuring Antonio Citterio-designed sculptural staircase
- One-of-a-kind Antonio Citterio designed interiors
- Double-door grand entrance
- Private elevator foyer
- Each home faces east towards Biscayne Bay
- 11' ceiling heights
- Independent service entrance
- Expansive great room and bedrooms
- En-suite bathroom in all bedrooms
- Antonio Citterio-designed closets
- Dual private water closets with high efficiency smart toilets
- Glass-enclosed Vaselli kitchen with Gaggenau appliances
- Two east-facing terraces
- Summer kitchen

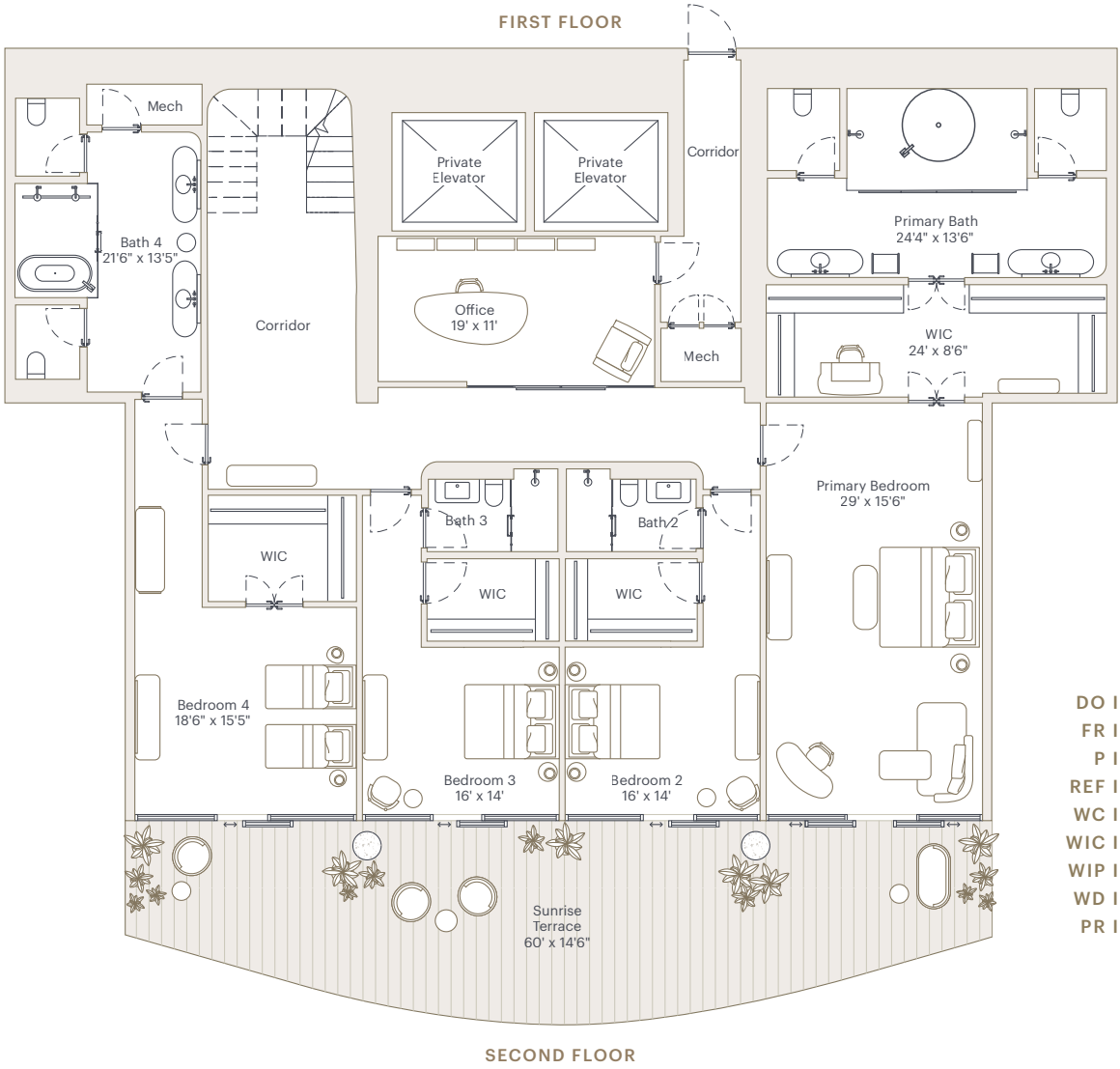


+ 1 305 706 1428 | INFO@1428BRICKELL.COM | 1428BRICKELL.COM

ORAL REPRESENTATIONS CANNOT BE RELIED UPON AS CORRECTLY STATING THE REPRESENTATIONS OF THE DEVELOPER. FOR CORRECT REPRESENTATIONS, MAKE REFERENCE TO THIS BROCHURE AND TO THE DOCUMENTS REQUIRED BY SECTION 718.503, FLORIDA STATUTES, TO BE FURNISHED BY A DEVELOPER TO A BUYER OR LESSEE.

WE ARE PLEDGED TO THE LETTER AND SPIRIT OF THE U.S. POLICY FOR ACHIEVEMENT OF EQUAL HOUSING OPPORTUNITY THROUGHOUT THE NATION. WE ENCOURAGE AND SUPPORT AN AFFIRMATIVE ADVERTISING AND MARKETING PROGRAM IN WHICH THERE ARE NO BARRIERS TO OBTAINING HOUSING BECAUSE OF RACE, COLOR, RELIGION, SEX, HANDICAP, FAMILIAL STATUS OR NATIONAL ORIGIN.

Please note that the Developer is Ytech - 1428 Brickell, LLC. This is not intended to be an offer to sell, or solicitation to buy, condominium units to residents of any jurisdiction where prohibited by law, and your eligibility for purchase will depend upon your state of residency. This offering is made only by the prospectus for the condominium and no statement should be relied upon if not made in the prospectus. The sketches, renderings, graphic materials, plans, specifications, terms, conditions and statements contained in this brochure are proposed only, and the Developer reserves the right to modify, revise or withdraw any or all of same in its sole discretion and without prior notice. All improvements, designs and construction are subject to first obtaining the appropriate federal, state and local permits and approvals for same. These drawings and depictions are conceptual only and are for the convenience of reference and including artists renderings. They should not be relied upon as representations, express or implied, of the final detail of the residences or the Condominium. The developer expressly reserves the right to make modifications, revisions, and changes it deems desirable in its sole and absolute discretion. All depictions of appliances, counters, soffits, floor coverings and other matters of detail, including, without limitation, items of finish and decoration, are conceptual only and are not necessarily included in each Unit. The photographs contained in this brochure may be stock photography or have been taken off-site and are used to depict the spirit of the lifestyles to be achieved rather than any that may exist or that may be proposed and are merely intended as illustrations of the activities and concepts depicted therein. Views vary from each unit and there is no assurance of the views from any particular unit. Ceiling heights are measured from top of floor slab to underside of ceiling slab. Additionally, ceiling height measurements exclude those areas where any soffits, moldings, drop and/or suspended ceilings and/or light fixtures may be installed. As such, the referenced ceiling height may not represent actual ceiling clearance. Many services provided will be offered on an a la carte basis, with charges for use required. Consult your Agreement and the Prospectus for the items included with the Unit. Dimensions and square footage are approximate and may vary with actual construction. The project graphics, renderings and text provided herein are copyrighted works owned by the developer. All rights reserved. Unauthorized reproduction, display or other dissemination of such materials is strictly prohibited and constitutes copyright infringement. No real estate broker is authorized to make any representations or other statements regarding the projects, and no agreements with, deposits paid to or other arrangements made with any real estate broker are or shall be binding on the developer. All prices are subject to change at any time and without notice, and do not include optional features or premiums for upgraded units. From time to time, price changes may have occurred that are not yet reflected on this brochure. Please check with the sales center for the most current pricing. Stated dimensions are measured to the exterior boundaries of the exterior walls and the centerline of interior demising walls and in fact vary from the dimensions that would be determined by using the description and definition of the "Unit" set forth in the Declaration (which generally only includes the interior air space between the perimeter walls and excludes interior structural components). For your reference, the area of the Unit, determined in accordance with those defined unit boundaries, is set forth on Exhibit 3 of the Declaration. Note that measurements of rooms set forth on this floor plan are generally taken at the greatest points of each given room(as if the room were a perfect rectangle), without regard for any cutouts. Accordingly, the area of the actual room will typically be smaller than the product obtained by multiplying the stated length times width. All dimensions are approximate and may vary with actual construction, and all floor plans and development plans are subject to change.



DO | DOUBLE OVEN

FR | FREEZER

P | PANTRY

REF | REFRIGERATOR

WC | WINE COOLER

WIC | WALK-IN CLOSET

WIP | WALK-IN PANTRY

WD | WASHER/DRYER

PR | POWDER ROOM

THE RESIDENCES AT

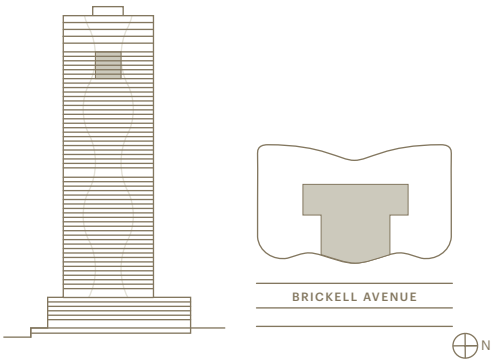
1428 BRICKELL

RESIDENCE H

3 BEDROOMS | 3 BATHROOMS | POWDER ROOM
DEN | ENTERTAINMENT ROOM | PRIVATE OFFICE
PRIVATE GYM | BUTLER’S KITCHEN | STAFF QUARTERS
WALK-IN PANTRY | DOUBLE WASHER/ DRYER
600-BOTTLE WINE CELLAR | TWO-STORY RESIDENCE
2 SUNRISE TERRACES | SUMMER KITCHEN

INTERIOR AREA: 6,686 SF / 621 SM
EXTERIOR AREA: 1,108 SF / 103 SM
TOTAL AREA: 7,794 SF / 724 SM

- Two-story residence featuring Antonio Citterio-designed sculptural staircase
- One-of-a-kind Antonio Citterio designed interiors
- Double-door grand entrance
- Private elevator foyer
- Each home faces east towards Biscayne Bay
- 12' ceiling heights
- Independent service entrance
- Expansive great room and bedrooms
- En-suite bathroom in all bedrooms
- Antonio Citterio-designed closets
- Dual private water closets with high efficiency smart toilets
- Glass-enclosed Vaselli kitchen with Gaggenau appliances
- Two east-facing terraces
- Summer kitchen

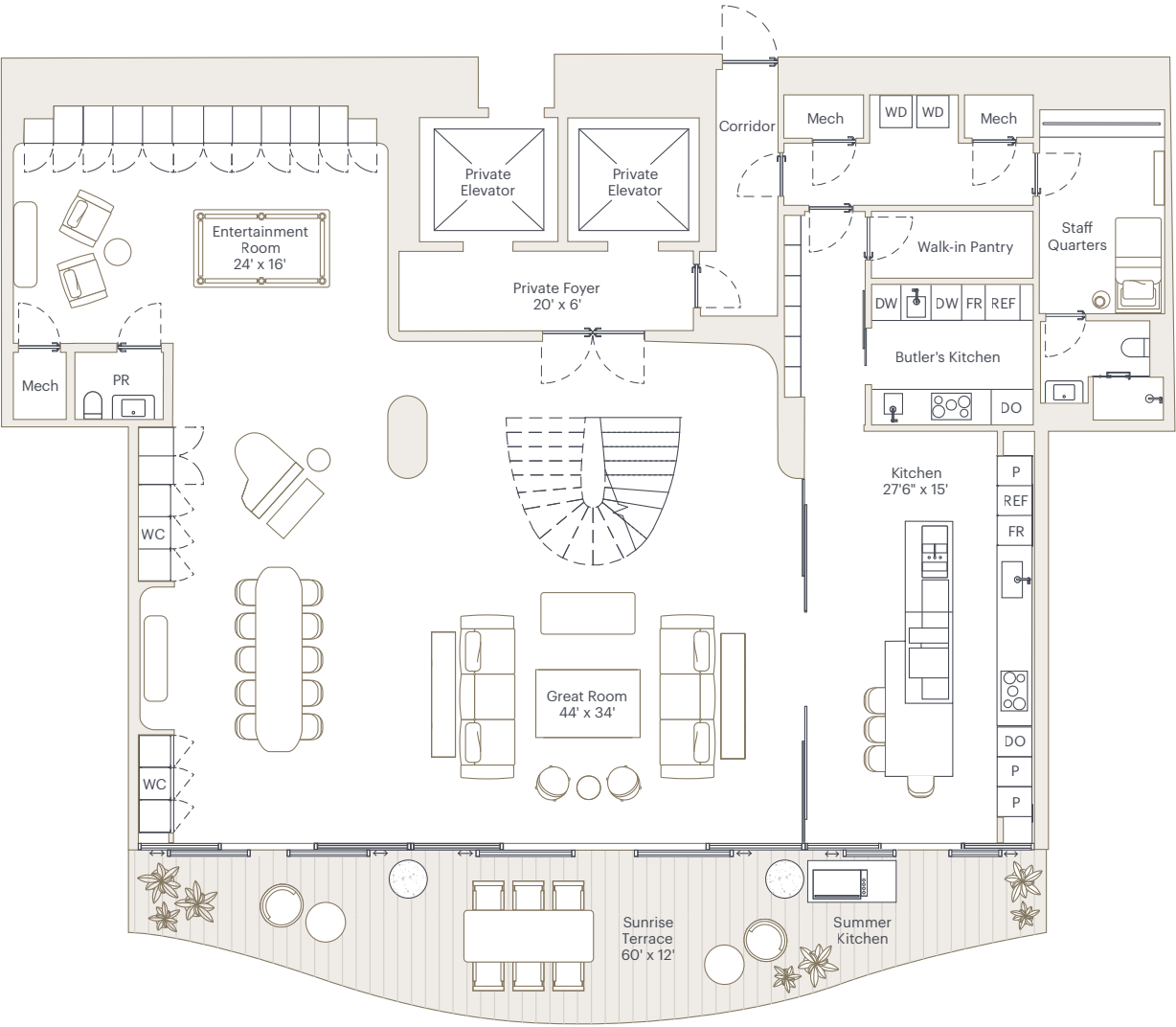


+ 1 305 706 1428 | INFO@1428BRICKELL.COM | 1428BRICKELL.COM

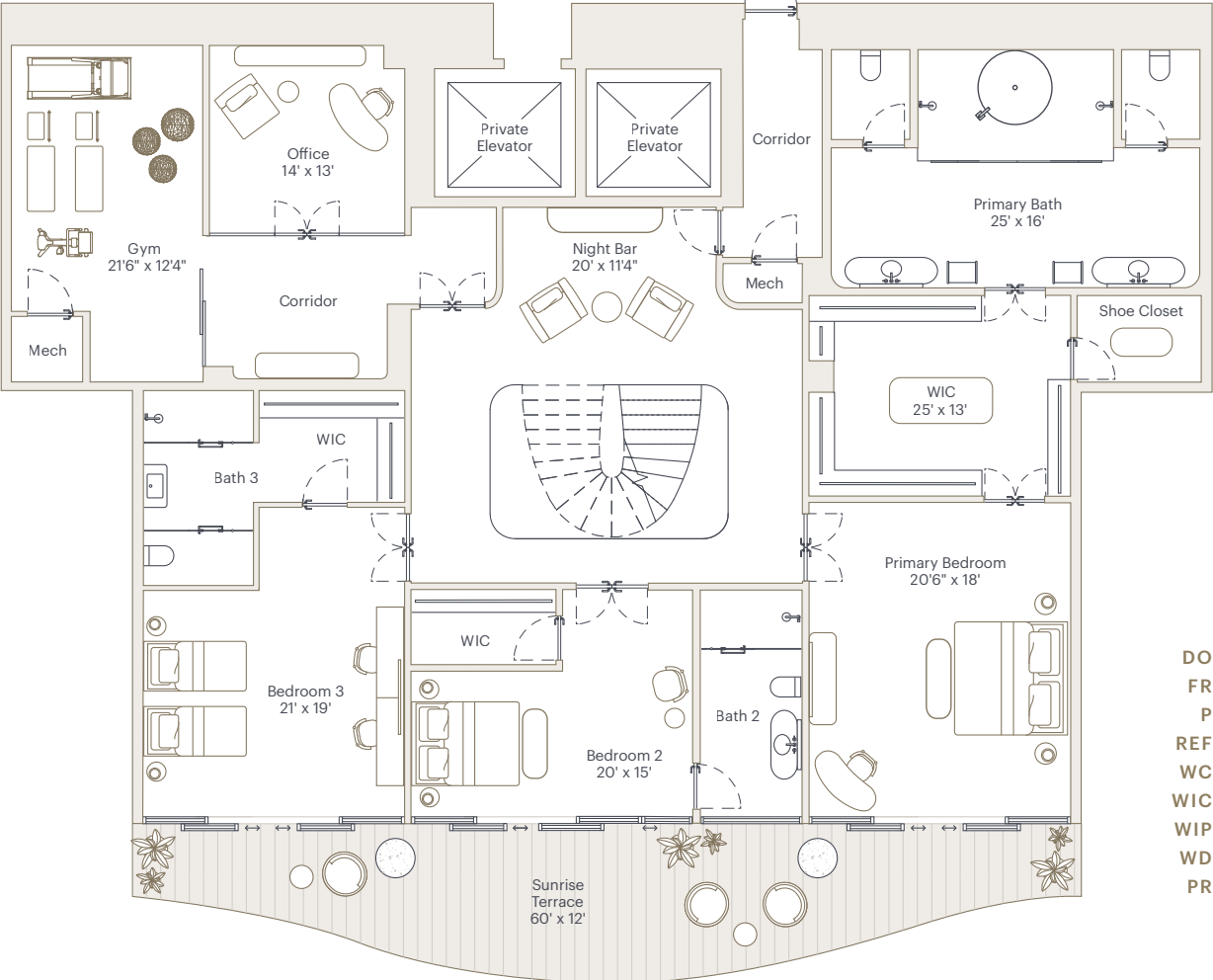
ORAL REPRESENTATIONS CANNOT BE RELIED UPON AS CORRECTLY STATING THE REPRESENTATIONS OF THE DEVELOPER. FOR CORRECT REPRESENTATIONS, MAKE REFERENCE TO THIS BROCHURE AND TO THE DOCUMENTS REQUIRED BY SECTION 718.503, FLORIDA STATUTES, TO BE FURNISHED BY A DEVELOPER TO A BUYER OR LESSEE.

WE ARE PLEDGED TO THE LETTER AND SPIRIT OF THE U.S. POLICY FOR ACHIEVEMENT OF EQUAL HOUSING OPPORTUNITY THROUGHOUT THE NATION. WE ENCOURAGE AND SUPPORT AN AFFIRMATIVE ADVERTISING AND MARKETING PROGRAM IN WHICH THERE ARE NO BARRIERS TO OBTAINING HOUSING BECAUSE OF RACE, COLOR, RELIGION, SEX, HANDICAP, FAMILIAL STATUS OR NATIONAL ORIGIN.

Please note that the Developer is Ytech - 1428 Brickell, LLC. This is not intended to be an offer to sell, or solicitation to buy, condominium units to residents of any jurisdiction where prohibited by law, and your eligibility for purchase will depend upon your state of residency. This offering is made only by the prospectus for the condominium and no statement should be relied upon if not made in the prospectus. The sketches, renderings, graphic materials, plans, specifications, terms, conditions and statements contained in this brochure are proposed only, and the Developer reserves the right to modify, revise or withdraw any or all of same in its sole discretion and without prior notice. All improvements, designs and construction are subject to first obtaining the appropriate federal, state and local permits and approvals for same. These drawings and depictions are conceptual only and are for the convenience of reference and including artists renderings. They should not be relied upon as representations, express or implied, of the final detail of the residences or the Condominium. The developer expressly reserves the right to make modifications, revisions, and changes it deems desirable in its sole and absolute discretion. All depictions of appliances, counters, soffits, floor coverings and other matters of detail, including, without limitation, items of finish and decoration, are conceptual only and are not necessarily included in each Unit. The photographs contained in this brochure may be stock photography or have been taken off-site and are used to depict the spirit of the lifestyles to be achieved rather than any that may exist or that may be proposed and are merely intended as illustrations of the activities and concepts depicted therein. Views vary from each unit and there is no assurance of the views from any particular unit. Ceiling heights are measured from top of floor slab to underside of ceiling slab. Additionally, ceiling height measurements exclude those areas where any soffits, moldings, drop and/or suspended ceilings and/or light fixtures may be installed. As such, the referenced ceiling height may not represent actual ceiling clearance. Many services provided will be offered on an a la carte basis, with charges for use required. Consult your Agreement and the Prospectus for the items included with the Unit. Dimensions and square footage are approximate and may vary with actual construction. The project graphics, renderings and text provided herein are copyrighted works owned by the developer. All rights reserved. Unauthorized reproduction, display or other dissemination of such materials is strictly prohibited and constitutes copyright infringement. No real estate broker is authorized to make any representations or other statements regarding the projects, and no agreements with, deposits paid to or other arrangements made with any real estate broker are or shall be binding on the developer. All prices are subject to change at any time and without notice, and do not include optional features or premiums for upgraded units. From time to time, price changes may have occurred that are not yet reflected on this brochure. Please check with the sales center for the most current pricing. Stated dimensions are measured to the exterior boundaries of the exterior walls and the centerline of interior demising walls and in fact vary from the dimensions that would be determined by using the description and definition of the "Unit" set forth in the Declaration (which generally only includes the interior air space between the perimeter walls and excludes interior structural components). For your reference, the area of the Unit, determined in accordance with those defined unit boundaries, is set forth on Exhibit 3 of the Declaration. Note that measurements of rooms set forth on this floor plan are generally taken at the greatest points of each given room(as if the room were a perfect rectangle), without regard for any cutouts. Accordingly, the area of the actual room will typically be smaller than the product obtained by multiplying the stated length times width. All dimensions are approximate and may vary with actual construction, and all floor plans and development plans are subject to change.



FIRST FLOOR



SECOND FLOOR

DO | DOUBLE OVEN
FR | FREEZER
PI | PANTRY
REF | REFRIGERATOR
WC | WINE COOLER
WIC | WALK-IN CLOSET
WIP | WALK-IN PANTRY
WD | WASHER/DRYER
PRI | POWDER ROOM